

LABOUR FORCE

AUSTRALIA
PRELIMINARY

EMBARGO: 11:30AM (CANBERRA TIME) THURS 9 SEPT 1999

AUGUST KEY FIGURES

TREND

	Jul 1999	Aug 1999	monthly change
Employed persons ('000)	8 782.7	8 801.3	0.2 %
Unemployed persons ('000)	679.4	674.8	-0.7 %
Unemployment rate (%)	7.2	7.1	-0.1 pts
Participation rate (%)	63.1	63.1	0.0 pts

SEASONALLY ADJUSTED

	Jul 1999	Aug 1999	monthly change
Employed persons ('000)	8 792.4	8 818.8	26.4
Unemployed persons ('000)	661.1	682.6	21.5
Unemployment rate (%)	7.0	7.2	0.2 pts
Participation rate (%)	63.0	63.3	0.2 pts

AUGUST KEY POINTS

TREND ESTIMATES

EMPLOYMENT

- has risen strongly in recent months, reaching 8,801,300.

UNEMPLOYMENT

- has been declining since July 1998 to 674,800.

UNEMPLOYMENT RATE

- declined slightly to 7.1%.

PARTICIPATION RATE

- remained steady at 63.1%.

SEASONALLY ADJUSTED ESTIMATES

EMPLOYMENT

- increased by 26,400 to 8,818,800. Full-time employment rose by 25,800 to 6,520,200 while part-time employment rose slightly to 2,298,600.

UNEMPLOYMENT

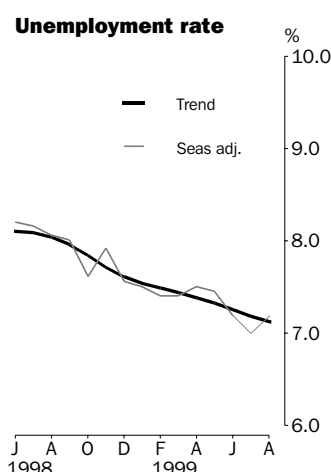
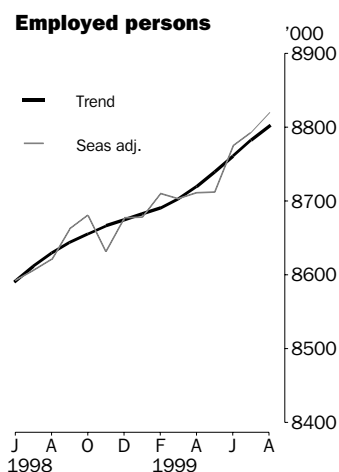
- increased by 21,500 to 682,600. The number of persons looking for full-time work rose by 15,000 to 497,100.

UNEMPLOYMENT RATE

- increased by 0.2 percentage points to 7.2%. The male unemployment rate rose by 0.3 percentage points to 7.3%, while the female unemployment rate remained steady at 7.0%.
- NSW 6.8% (6.1% last month); Vic 7.3% (7.6%); Qld 7.6% (8.0%); SA 8.7% (8.0%); WA 6.5% (6.4%); Tas 8.5% (8.9%).

PARTICIPATION RATE

- increased by 0.2 percentage points to 63.3%.



- For further information about these and related statistics, contact Michael Johnson on 02 6252 6525 or Client Services in any ABS office as shown on the back cover of this publication.

FORTHCOMING ISSUES

ISSUE	RELEASE DATE
September 1999	07 October 1999
October 1999	11 November 1999
November 1999	09 December 1999
December 1999	13 January 2000
January 2000	10 February 2000
February 2000	09 March 2000



ROUNDING

Estimates of monthly change shown on page 1 have been calculated using unrounded estimates, and may be different from, but are more accurate than, movements obtained from the rounded estimates. The graphs on page 1 also depict movements calculated from unrounded estimates.



SAMPLING ERRORS

The estimates in this publication are based on a sample survey. Because the entire population is not enumerated, the published estimates and the movements derived from them are subject to sampling variability. Standard errors give a measure of this variability and appear on pages 30 and 31.

The 95% confidence intervals below provide another way of looking at the variability inherent in estimates from sample surveys. The interval bounded by the two limits is the 95% confidence interval. A 95% confidence interval indicates that we are 95% confident that the upper and lower limits enclose the true value of the estimate.

SEASONALLY ADJUSTED DATA SERIES	MOVEMENTS JULY 1999 TO AUGUST 1999			
	Monthly change	95% Confidence interval		
Total employment	+26 400	–9 400	to	62 200
Total unemployment	+21 500	7 300	to	35 700
Unemployment rate	0.2 pts	0.0 pts	to	0.4 pts
Participation rate	0.2 pts	0.0 pts	to	0.4 pts

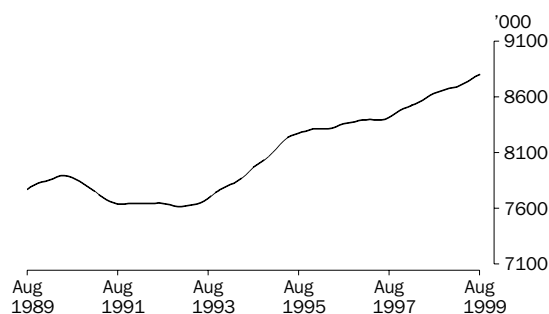


W. McLennan
Australian Statistician

PRINCIPAL LABOUR FORCE SERIES: Trend estimates

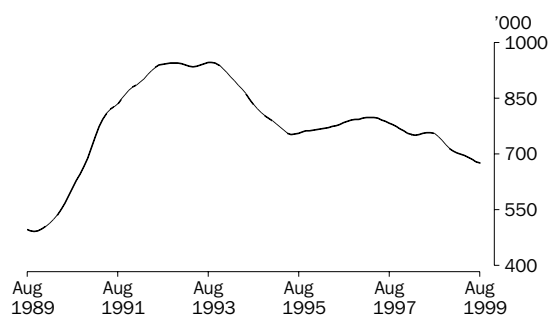
EMPLOYED PERSONS

The trend estimate of employed persons decreased from 7,894,000 in June 1990 to 7,615,400 in January 1993. The trend then rose strongly until mid 1995. Growth in the trend estimate was then slow until mid 1997, but has since risen steadily to stand at 8,801,300 in August 1999.



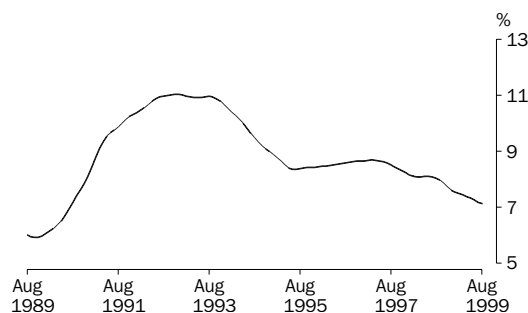
UNEMPLOYED PERSONS

The trend estimate of unemployed persons increased rapidly from 491,500 in October 1989, to peak at 946,900 in September 1993. The trend then fell sharply to 752,400 in June 1995, before rising slowly to 798,600 in March 1997. Since then, the trend has generally fallen, and was 674,800 in August 1999.



UNEMPLOYMENT RATE

From a high of 11.0% in late 1992, the trend unemployment rate fell rapidly to 8.4% in July 1995. The trend then rose slowly to 8.7% in March 1997. It has since declined to stand at 7.1% in August 1999.

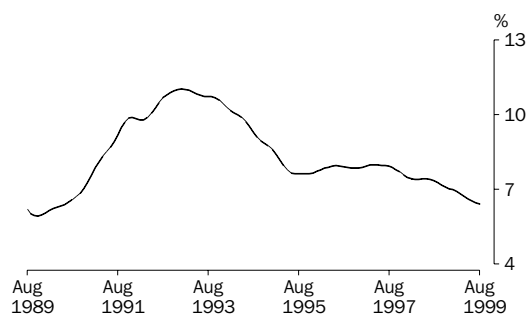


STATES: Trend estimates

UNEMPLOYMENT RATE

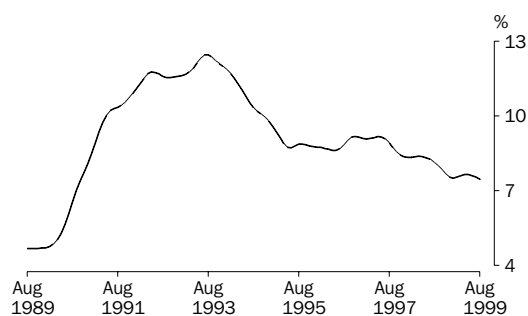
NEW SOUTH WALES

The trend unemployment rate for New South Wales rose strongly from 5.9% in November 1989, to a peak of 10.8% in June 1993, before falling to 7.6% in July 1995. For the next two years, the trend remained flat. From 7.4% in May 1998, the trend has decreased to 6.4% in August 1999.



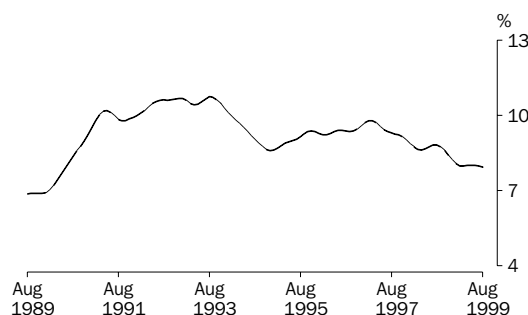
VICTORIA

From 4.7% in January 1990, the trend estimate of the unemployment rate for Victoria rose rapidly to a high of 12.5% in August 1993, before declining to 8.7% in June 1995. The trend unemployment rate has since generally decreased, to stand at 7.5% in August 1999.



QUEENSLAND

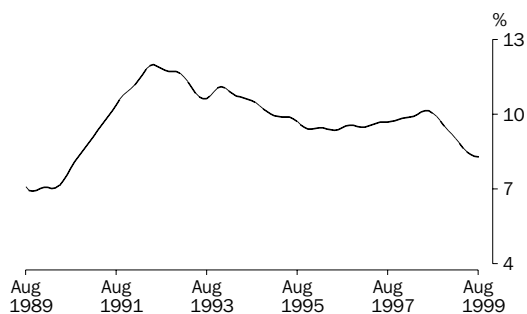
The trend estimate for the unemployment rate for Queensland peaked at 10.7% in August 1993, before falling to 8.6% in December 1994. The trend then rose gradually to 9.8% in March 1997. The trend has since been generally declining, with the unemployment rate at 7.9% in August 1999.



UNEMPLOYMENT RATE

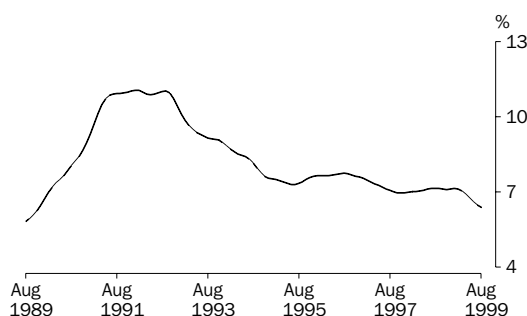
SOUTH AUSTRALIA

The trend unemployment rate for South Australia rose rapidly from 6.9% in October 1989, to peak at 12.0% in June 1992. Over the next four years, the trend fell to a low of 9.3% in June 1996, before it rose slowly to 10.1% in June 1998. Since then, the trend has decreased sharply to stand at 8.3% in August 1999.



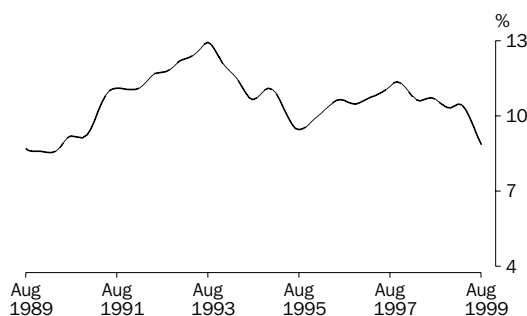
WESTERN AUSTRALIA

From a rate of 5.8% in August 1989, the trend unemployment rate for Western Australia rose to around 11% from mid 1991 through to late 1992. The trend then declined steadily to 7.3% in July 1995. Since then, the trend estimate has remained relatively flat, before falling over recent months to 6.4% in August 1999.



TASMANIA

The trend estimate of the unemployment rate for Tasmania fell from a peak of 12.9% in August 1993, to 9.5% in August 1995. The trend rate then rose slowly to 11.3% in October 1997. The trend has since been falling, sharply in recent months, to stand at 8.9% in August 1999.



LABOUR FORCE STATUS (AGED 15 AND OVER): Original

	EMPLOYED.....			UNEMPLOYED.....							
				Looking for f/t work	Looking for p/t work		Labour force	Not in labour force	Civilian population aged 15 and over	Unemp- loyment rate	Partic- ipation rate
Month	'000	'000	'000	'000	'000	'000	'000	'000	'000	%	%
MALES											
1998											
June	4 250.2	608.0	4 858.2	379.3	51.1	430.4	5 288.6	1 975.5	7 264.1	8.1	72.8
July	4 294.0	577.0	4 871.1	379.2	50.7	429.9	5 301.0	1 971.4	7 272.4	8.1	72.9
August	4 225.9	583.5	4 809.4	375.9	58.6	434.5	5 243.9	2 036.8	7 280.7	8.3	72.0
September	4 317.0	610.0	4 926.9	383.7	59.2	442.9	5 369.8	1 919.2	7 289.0	8.2	73.7
October	4 303.2	609.8	4 913.0	340.4	54.2	394.5	5 307.5	1 991.6	7 299.1	7.4	72.7
November	4 278.1	611.5	4 889.5	358.5	52.1	410.6	5 300.1	2 009.1	7 309.2	7.7	72.5
December	4 343.3	622.0	4 965.4	354.7	57.7	412.3	5 377.7	1 941.6	7 319.3	7.7	73.5
1999											
January	4 282.3	600.4	4 882.6	389.5	57.8	447.3	5 329.9	1 998.8	7 328.7	8.4	72.7
February	4 318.0	598.3	4 916.3	381.0	63.1	444.0	5 360.3	1 977.7	7 338.0	8.3	73.0
March	4 312.1	634.3	4 946.4	335.8	69.6	405.4	5 351.8	1 995.6	7 347.4	7.6	72.8
April	4 299.2	640.7	4 939.9	337.3	64.9	402.2	5 342.1	2 015.0	7 357.2	7.5	72.6
May	4 290.9	641.8	4 932.7	332.3	65.4	397.7	5 330.4	2 036.6	7 367.0	7.5	72.4
June	4 316.8	660.8	4 977.6	321.9	49.8	371.7	5 349.4	2 027.4	7 376.8	6.9	72.5
July	4 373.7	618.8	4 992.4	302.2	57.2	359.4	5 351.8	2 034.2	7 386.0	6.7	72.5
August	4 323.8	620.8	4 944.5	316.4	66.4	382.9	5 327.4	2 067.9	7 395.3	7.2	72.0
FEMALES											
1998											
June	2 095.8	1 656.6	3 752.3	199.6	103.7	303.2	4 055.6	3 441.9	7 497.5	7.5	54.1
July	2 158.1	1 609.3	3 767.4	198.7	95.7	294.4	4 061.8	3 444.1	7 505.9	7.2	54.1
August	2 100.1	1 627.7	3 727.8	196.2	93.7	289.9	4 017.6	3 496.5	7 514.2	7.2	53.5
September	2 143.1	1 667.4	3 810.5	207.0	112.4	319.4	4 129.8	3 392.7	7 522.5	7.7	54.9
October	2 126.9	1 651.2	3 778.1	182.9	105.3	288.2	4 066.3	3 465.7	7 532.0	7.1	54.0
November	2 112.7	1 648.7	3 761.4	189.7	106.5	296.2	4 057.6	3 484.0	7 541.6	7.3	53.8
December	2 190.0	1 635.9	3 826.0	194.9	97.0	291.9	4 117.9	3 433.2	7 551.1	7.1	54.5
1999											
January	2 139.8	1 530.6	3 670.4	210.1	97.1	307.2	3 977.6	3 582.5	7 560.1	7.7	52.6
February	2 126.0	1 606.4	3 732.4	213.0	123.8	336.8	4 069.2	3 499.8	7 569.1	8.3	53.8
March	2 103.2	1 647.7	3 750.9	198.8	132.2	331.1	4 082.0	3 496.1	7 578.1	8.1	53.9
April	2 110.0	1 663.7	3 773.7	190.2	112.7	302.9	4 076.7	3 510.5	7 587.2	7.4	53.7
May	2 108.5	1 675.4	3 783.8	181.0	110.2	291.1	4 074.9	3 521.3	7 596.3	7.1	53.6
June	2 132.5	1 683.5	3 816.0	175.8	100.9	276.7	4 092.7	3 512.7	7 605.4	6.8	53.8
July	2 172.6	1 659.4	3 832.0	160.4	104.2	264.6	4 096.6	3 517.9	7 614.5	6.5	53.8
August	2 109.6	1 677.5	3 787.1	166.8	103.1	269.9	4 057.0	3 566.6	7 623.6	6.7	53.2
PERSONS											
1998											
June	6 346.0	2 264.5	8 610.5	578.9	154.8	733.7	9 344.2	5 417.4	14 761.7	7.9	63.3
July	6 452.1	2 186.4	8 638.5	577.9	146.4	724.3	9 362.7	5 415.5	14 778.2	7.7	63.4
August	6 326.0	2 211.1	8 537.2	572.1	152.3	724.4	9 261.5	5 533.3	14 794.8	7.8	62.6
September	6 460.0	2 277.3	8 737.4	590.7	171.6	762.3	9 499.6	5 311.8	14 811.5	8.0	64.1
October	6 430.1	2 261.0	8 691.1	523.2	159.5	682.7	9 373.8	5 457.3	14 831.1	7.3	63.2
November	6 390.8	2 260.2	8 651.0	548.1	158.6	706.7	9 357.7	5 493.0	14 850.7	7.6	63.0
December	6 533.4	2 258.0	8 791.3	549.5	154.7	704.3	9 495.6	5 374.8	14 870.4	7.4	63.9
1999											
January	6 422.1	2 131.0	8 553.0	599.7	154.8	754.5	9 307.5	5 581.2	14 888.8	8.1	62.5
February	6 444.0	2 204.7	8 648.7	594.0	186.9	780.9	9 429.6	5 477.5	14 907.1	8.3	63.3
March	6 415.4	2 282.0	8 697.3	534.6	201.8	736.4	9 433.8	5 491.7	14 925.5	7.8	63.2
April	6 409.2	2 304.4	8 713.6	527.5	177.7	705.2	9 418.8	5 525.5	14 944.3	7.5	63.0
May	6 399.3	2 317.2	8 716.5	513.2	175.5	688.8	9 405.3	5 557.9	14 963.2	7.3	62.9
June	6 449.3	2 344.3	8 793.6	497.8	150.7	648.5	9 442.1	5 540.1	14 982.1	6.9	63.0
July	6 546.3	2 278.1	8 824.4	462.6	161.4	624.0	9 448.4	5 552.1	15 000.5	6.6	63.0
August	6 433.4	2 298.2	8 731.6	483.2	169.6	652.8	9 384.4	5 634.5	15 018.9	7.0	62.5

LABOUR FORCE STATUS (AGED 15 AND OVER): Seasonally adjusted

Month	EMPLOYED.....			UNEMPLOYED.....					
	Full time	Part time	Total	Looking for f/t work	Looking for p/t work	Total	Labour force	Unemployment rate	Participation rate
	'000	'000	'000	'000	'000	'000	'000	%	%
MALES									
1998									
June	4 264.9	590.7	4 855.6	389.7	56.9	446.6	5 302.2	8.4	73.0
July	4 271.8	586.1	4 857.9	391.1	57.2	448.3	5 306.2	8.4	73.0
August	4 276.5	578.2	4 854.6	382.8	65.5	448.4	5 303.0	8.5	72.8
September	4 306.7	596.2	4 902.9	381.4	55.0	436.4	5 339.3	8.2	73.3
October	4 296.6	606.7	4 903.3	360.6	56.8	417.3	5 320.6	7.8	72.9
November	4 283.8	611.2	4 894.9	370.6	57.4	428.0	5 323.0	8.0	72.8
December	4 278.3	622.0	4 900.3	360.5	54.4	414.9	5 315.2	7.8	72.6
1999									
January	4 275.3	632.2	4 907.6	356.3	53.5	409.8	5 317.4	7.7	72.6
February	4 310.7	627.0	4 937.7	349.5	57.0	406.5	5 344.2	7.6	72.8
March	4 329.8	626.0	4 955.8	328.6	60.7	389.2	5 345.0	7.3	72.7
April	4 313.9	631.0	4 944.9	346.1	63.0	409.2	5 354.1	7.6	72.8
May	4 305.3	631.9	4 937.2	336.6	68.1	404.7	5 341.8	7.6	72.5
June	4 332.0	641.3	4 973.3	330.9	55.5	386.4	5 359.7	7.2	72.7
July	4 350.9	628.9	4 979.8	311.1	64.5	375.6	5 355.4	7.0	72.5
August	4 376.4	615.4	4 991.9	321.3	74.4	395.8	5 387.7	7.3	72.9
FEMALES									
1998									
June	2 116.8	1 620.1	3 736.8	209.3	111.7	321.0	4 057.8	7.9	54.1
July	2 130.7	1 617.6	3 748.3	211.5	105.0	316.5	4 064.8	7.8	54.2
August	2 133.6	1 633.1	3 766.7	206.6	101.0	307.6	4 074.3	7.5	54.2
September	2 128.6	1 630.2	3 758.8	211.1	106.6	317.7	4 076.5	7.8	54.2
October	2 122.8	1 655.0	3 777.8	192.3	106.4	298.8	4 076.5	7.3	54.1
November	2 108.5	1 628.4	3 736.9	200.8	113.8	314.6	4 051.5	7.8	53.7
December	2 139.2	1 638.1	3 777.4	194.8	100.1	294.9	4 072.3	7.2	53.9
1999									
January	2 139.4	1 630.7	3 770.1	193.7	100.4	294.1	4 064.2	7.2	53.8
February	2 133.9	1 639.0	3 772.8	183.9	106.2	290.1	4 062.9	7.1	53.7
March	2 115.2	1 632.2	3 747.4	189.7	116.5	306.2	4 053.6	7.6	53.5
April	2 121.9	1 644.4	3 766.2	190.2	107.7	297.9	4 064.1	7.3	53.6
May	2 124.0	1 651.1	3 775.0	184.0	113.4	297.3	4 072.4	7.3	53.6
June	2 155.3	1 646.0	3 801.3	184.5	108.7	293.2	4 094.5	7.2	53.8
July	2 143.6	1 669.0	3 812.6	171.0	114.4	285.4	4 098.1	7.0	53.8
August	2 143.8	1 683.2	3 827.0	175.7	111.0	286.8	4 113.7	7.0	54.0
PERSONS									
1998									
June	6 381.6	2 210.8	8 592.4	599.0	168.6	767.6	9 360.0	8.2	63.4
July	6 402.5	2 203.7	8 606.2	602.5	162.2	764.8	9 371.0	8.2	63.4
August	6 410.0	2 211.3	8 621.3	589.4	166.6	756.0	9 377.3	8.1	63.4
September	6 435.3	2 226.4	8 661.7	592.5	161.6	754.1	9 415.8	8.0	63.6
October	6 419.4	2 261.7	8 681.1	552.9	163.2	716.1	9 397.2	7.6	63.4
November	6 392.3	2 239.6	8 631.9	571.4	171.2	742.6	9 374.5	7.9	63.1
December	6 417.5	2 260.1	8 677.7	555.3	154.5	709.8	9 387.5	7.6	63.1
1999									
January	6 414.7	2 262.9	8 677.7	550.0	153.9	703.9	9 381.6	7.5	63.0
February	6 444.6	2 266.0	8 710.6	533.4	163.2	696.5	9 407.1	7.4	63.1
March	6 445.0	2 258.2	8 703.2	518.3	177.2	695.5	9 398.7	7.4	63.0
April	6 435.8	2 275.4	8 711.1	536.3	170.8	707.0	9 418.2	7.5	63.0
May	6 429.3	2 282.9	8 712.2	520.6	181.4	702.0	9 414.2	7.5	62.9
June	6 487.3	2 287.3	8 774.6	515.4	164.2	679.6	9 454.2	7.2	63.1
July	6 494.5	2 298.0	8 792.4	482.1	179.0	661.1	9 453.5	7.0	63.0
August	6 520.2	2 298.6	8 818.8	497.1	185.5	682.6	9 501.4	7.2	63.3

LABOUR FORCE STATUS (AGED 15 AND OVER): Trend(a)

Month	EMPLOYED.....			UNEMPLOYED.....					
	Full time	Part time	Total	Looking for f/t work	Looking for p/t work	Total	Labour force	Unemployment rate	Participation rate
	'000	'000	'000	'000	'000	'000	'000	%	%
MALES									
1998									
June	4 271.2	585.1	4 856.3	384.0	58.4	442.4	5 298.7	8.3	72.9
July	4 277.3	586.9	4 864.2	384.4	58.8	443.2	5 307.5	8.4	73.0
August	4 282.9	590.2	4 873.1	382.5	58.8	441.2	5 314.3	8.3	73.0
September	4 286.1	596.0	4 882.1	378.5	58.2	436.7	5 318.8	8.2	73.0
October	4 287.4	603.8	4 891.2	372.7	57.0	429.7	5 320.9	8.1	72.9
November	4 288.5	612.3	4 900.8	365.8	55.8	421.7	5 322.5	7.9	72.8
December	4 290.2	619.9	4 910.1	359.2	55.5	414.8	5 324.8	7.8	72.8
1999									
January	4 293.7	625.4	4 919.1	353.5	56.2	409.8	5 328.9	7.7	72.7
February	4 299.2	629.0	4 928.2	348.2	57.6	405.8	5 334.0	7.6	72.7
March	4 307.1	631.0	4 938.1	342.9	59.4	402.3	5 340.4	7.5	72.7
April	4 316.5	631.9	4 948.3	337.6	61.1	398.6	5 347.0	7.5	72.7
May	4 326.1	631.7	4 957.7	332.4	62.8	395.3	5 353.0	7.4	72.7
June	4 336.2	630.7	4 966.9	327.5	64.5	392.0	5 359.0	7.3	72.6
July	4 347.1	628.9	4 976.0	322.8	66.3	389.1	5 365.1	7.3	72.6
August	4 356.0	627.0	4 983.0	319.2	67.8	387.0	5 370.0	7.2	72.6
FEMALES									
1998									
June	2 116.5	1 619.1	3 735.7	211.5	103.5	315.1	4 050.7	7.8	54.0
July	2 121.9	1 625.9	3 747.8	209.8	104.9	314.7	4 062.5	7.7	54.1
August	2 125.1	1 631.3	3 756.4	207.5	106.0	313.5	4 069.9	7.7	54.2
September	2 127.0	1 635.1	3 762.0	204.6	106.1	310.7	4 072.7	7.6	54.1
October	2 127.9	1 637.0	3 764.9	201.2	105.8	307.0	4 071.9	7.5	54.1
November	2 128.4	1 637.3	3 765.7	197.6	105.5	303.0	4 068.7	7.4	54.0
December	2 128.0	1 636.6	3 764.6	194.4	105.5	299.9	4 064.5	7.4	53.8
1999									
January	2 127.6	1 635.4	3 763.1	192.0	106.2	298.2	4 061.2	7.3	53.7
February	2 127.5	1 635.2	3 762.6	190.2	107.2	297.4	4 060.1	7.3	53.6
March	2 127.9	1 637.5	3 765.3	188.5	108.7	297.2	4 062.5	7.3	53.6
April	2 129.4	1 642.5	3 771.9	186.4	110.3	296.7	4 068.6	7.3	53.6
May	2 132.5	1 649.3	3 781.8	183.8	111.5	295.3	4 077.1	7.2	53.7
June	2 137.2	1 656.9	3 794.0	181.0	112.0	293.0	4 087.0	7.2	53.7
July	2 142.0	1 664.8	3 806.7	178.1	112.2	290.3	4 097.1	7.1	53.8
August	2 146.5	1 671.8	3 818.3	175.8	112.0	287.8	4 106.1	7.0	53.9
PERSONS									
1998									
June	6 387.7	2 204.3	8 591.9	595.6	161.9	757.5	9 349.4	8.1	63.3
July	6 399.2	2 212.9	8 612.1	594.3	163.7	757.9	9 370.0	8.1	63.4
August	6 408.0	2 221.6	8 629.6	590.0	164.7	754.7	9 384.2	8.0	63.4
September	6 413.0	2 231.1	8 644.1	583.1	164.3	747.4	9 391.5	8.0	63.4
October	6 415.4	2 240.8	8 656.1	573.9	162.8	736.7	9 392.8	7.8	63.3
November	6 416.9	2 249.6	8 666.5	563.4	161.3	724.7	9 391.2	7.7	63.2
December	6 418.2	2 256.5	8 674.6	553.6	161.0	714.7	9 389.3	7.6	63.1
1999									
January	6 421.4	2 260.8	8 682.2	545.5	162.4	707.9	9 390.1	7.5	63.1
February	6 426.6	2 264.2	8 690.8	538.4	164.9	703.3	9 394.1	7.5	63.0
March	6 434.9	2 268.5	8 703.4	531.4	168.1	699.5	9 402.9	7.4	63.0
April	6 445.9	2 274.4	8 720.3	523.9	171.4	695.3	9 415.6	7.4	63.0
May	6 458.6	2 280.9	8 739.5	516.3	174.3	690.6	9 430.1	7.3	63.0
June	6 473.4	2 287.6	8 761.0	508.5	176.5	685.0	9 446.0	7.3	63.0
July	6 489.0	2 293.7	8 782.7	501.0	178.5	679.4	9 462.1	7.2	63.1
August	6 502.5	2 298.8	8 801.3	495.0	179.9	674.8	9 476.2	7.1	63.1

(a) Trend estimates for February 1999 to July 1999 have been revised.

UNEMPLOYED PERSONS: Original

Month	NUMBER OF UNEMPLOYED PERSONS.....					UNEMPLOYMENT RATE.....					UNEMPLOYMENT TO POPULATION RATIO	
	Aged 15-19 looking for f/t work	Aged 20 and over looking for f/t work	Total looking for f/t work	Looking for p/t work	Total	Aged 15-19 looking for f/t work	Aged 20 and over looking for f/t work	Total looking for f/t work	Looking for p/t work	Total	Aged 15-19 looking for f/t work	Aged 20 and over looking for f/t work
	'000	'000	'000	'000	'000	%	%	%	%	%	%	%
MALES												
1998												
June	48.5	330.9	379.3	51.1	430.4	26.0	7.4	8.2	7.8	8.1	7.2	5.0
July	47.8	331.4	379.2	50.7	429.9	25.4	7.4	8.1	8.1	8.1	7.1	5.0
August	46.5	329.5	375.9	58.6	434.5	25.5	7.5	8.2	9.1	8.3	6.9	5.0
September	47.4	336.2	383.7	59.2	442.9	25.6	7.4	8.2	8.8	8.2	7.0	5.1
October	41.5	298.9	340.4	54.2	394.5	22.6	6.7	7.3	8.2	7.4	6.1	4.5
November	42.6	315.9	358.5	52.1	410.6	23.7	7.1	7.7	7.8	7.7	6.3	4.8
December	52.6	302.0	354.7	57.7	412.3	24.8	6.7	7.5	8.5	7.7	7.8	4.5
1999												
January	52.7	336.8	389.5	57.8	447.3	25.2	7.5	8.3	8.8	8.4	7.8	5.1
February	44.4	336.6	381.0	63.1	444.0	21.9	7.5	8.1	9.5	8.3	6.5	5.1
March	42.5	293.2	335.8	69.6	405.4	22.9	6.6	7.2	9.9	7.6	6.3	4.4
April	40.8	296.5	337.3	64.9	402.2	21.8	6.7	7.3	9.2	7.5	6.0	4.4
May	38.1	294.2	332.3	65.4	397.7	21.3	6.6	7.2	9.2	7.5	5.6	4.4
June	39.1	282.9	321.9	49.8	371.7	22.1	6.3	6.9	7.0	6.9	5.7	4.2
July	32.8	269.4	302.2	57.2	359.4	17.3	6.0	6.5	8.5	6.7	4.8	4.0
August	32.2	284.2	316.4	66.4	382.9	18.3	6.4	6.8	9.7	7.2	4.7	4.2
FEMALES												
1998												
June	30.6	169.0	199.6	103.7	303.2	30.7	7.7	8.7	5.9	7.5	4.8	2.5
July	31.1	167.6	198.7	95.7	294.4	29.1	7.4	8.4	5.6	7.2	4.9	2.4
August	30.2	166.0	196.2	93.7	289.9	30.6	7.6	8.5	5.4	7.2	4.7	2.4
September	30.0	177.0	207.0	112.4	319.4	29.5	7.9	8.8	6.3	7.7	4.7	2.6
October	28.8	154.1	182.9	105.3	288.2	28.6	7.0	7.9	6.0	7.1	4.5	2.2
November	30.9	158.8	189.7	106.5	296.2	29.8	7.2	8.2	6.1	7.3	4.8	2.3
December	37.2	157.7	194.9	97.0	291.9	29.4	7.0	8.2	5.6	7.1	5.8	2.3
1999												
January	36.3	173.9	210.1	97.1	307.2	27.7	7.8	8.9	6.0	7.7	5.6	2.5
February	35.1	177.8	213.0	123.8	336.8	30.2	8.0	9.1	7.2	8.3	5.4	2.6
March	29.6	169.2	198.8	132.2	331.1	27.7	7.7	8.6	7.4	8.1	4.6	2.4
April	30.4	159.8	190.2	112.7	302.9	26.7	7.3	8.3	6.3	7.4	4.7	2.3
May	31.3	149.6	181.0	110.2	291.1	28.6	6.9	7.9	6.2	7.1	4.8	2.2
June	26.2	149.6	175.8	100.9	276.7	24.6	6.8	7.6	5.7	6.8	4.0	2.2
July	25.6	134.8	160.4	104.2	264.6	22.3	6.1	6.9	5.9	6.5	3.9	1.9
August	26.4	140.4	166.8	103.1	269.9	25.4	6.5	7.3	5.8	6.7	4.1	2.0
PERSONS												
1998												
June	79.0	499.9	578.9	154.8	733.7	27.6	7.5	8.4	6.4	7.9	6.0	3.7
July	78.9	499.0	577.9	146.4	724.3	26.7	7.4	8.2	6.3	7.7	6.0	3.7
August	76.6	495.5	572.1	152.3	724.4	27.3	7.5	8.3	6.4	7.8	5.8	3.7
September	77.4	513.3	590.7	171.6	762.3	27.0	7.6	8.4	7.0	8.0	5.9	3.8
October	70.3	453.0	523.2	159.5	682.7	24.7	6.8	7.5	6.6	7.3	5.3	3.4
November	73.5	474.6	548.1	158.6	706.7	25.9	7.1	7.9	6.6	7.6	5.6	3.5
December	89.8	459.7	549.5	154.7	704.3	26.5	6.8	7.8	6.4	7.4	6.8	3.4
1999												
January	89.0	510.6	599.7	154.8	754.5	26.2	7.6	8.5	6.8	8.1	6.7	3.8
February	79.6	514.4	594.0	186.9	780.9	24.9	7.7	8.4	7.8	8.3	6.0	3.8
March	72.2	462.4	534.6	201.8	736.4	24.7	6.9	7.7	8.1	7.8	5.4	3.4
April	71.2	456.3	527.5	177.7	705.2	23.6	6.9	7.6	7.2	7.5	5.4	3.4
May	69.5	443.8	513.2	175.5	688.8	24.0	6.7	7.4	7.0	7.3	5.2	3.3
June	65.3	432.5	497.8	150.7	648.5	23.0	6.5	7.2	6.0	6.9	4.9	3.2
July	58.4	404.2	462.6	161.4	624.0	19.2	6.0	6.6	6.6	6.6	4.4	3.0
August	58.7	424.6	483.2	169.6	652.8	20.9	6.4	7.0	6.9	7.0	4.4	3.1

UNEMPLOYED PERSONS: Seasonally adjusted

Month	NUMBER OF UNEMPLOYED PERSONS....					UNEMPLOYMENT RATE.....					UNEMPLOYMENT TO POPULATION RATIO	
	<i>Aged 15-19 looking for f/t work</i>	<i>Aged 20 and over looking for f/t work</i>	<i>Total looking for f/t work</i>	<i>Looking for p/t work</i>	<i>Total</i>	<i>Aged 15-19 looking for f/t work</i>	<i>Aged 20 and over looking for f/t work</i>	<i>Total looking for f/t work</i>	<i>Looking for p/t work</i>	<i>Total</i>	<i>Aged 15-19 looking for f/t work</i>	<i>Aged 20 and over looking for f/t work</i>
	'000	'000	'000	'000	'000	%	%	%	%	%	%	%
MALES												
1998												
June	50.0	339.7	389.7	56.9	446.6	25.3	7.6	8.4	8.8	8.4	7.4	5.2
July	51.1	340.0	391.1	57.2	448.3	26.9	7.6	8.4	8.9	8.4	7.6	5.2
August	51.9	330.9	382.8	65.5	448.4	26.3	7.4	8.2	10.2	8.5	7.7	5.0
September	52.5	328.8	381.4	55.0	436.4	27.0	7.3	8.1	8.4	8.2	7.8	5.0
October	46.8	313.8	360.6	56.8	417.3	24.5	7.0	7.7	8.6	7.8	6.9	4.7
November	46.9	323.7	370.6	57.4	428.0	24.4	7.3	8.0	8.6	8.0	6.9	4.9
December	44.5	316.0	360.5	54.4	414.9	23.3	7.1	7.8	8.0	7.8	6.6	4.8
1999												
January	42.7	313.7	356.3	53.5	409.8	23.1	7.1	7.7	7.8	7.7	6.3	4.7
February	39.9	309.6	349.5	57.0	406.5	20.9	6.9	7.5	8.3	7.6	5.9	4.6
March	42.4	286.1	328.6	60.7	389.2	23.1	6.4	7.1	8.8	7.3	6.2	4.3
April	42.7	303.4	346.1	63.0	409.2	22.7	6.8	7.4	9.1	7.6	6.3	4.5
May	37.9	298.7	336.6	68.1	404.7	20.5	6.7	7.3	9.7	7.6	5.6	4.5
June	40.3	290.6	330.9	55.5	386.4	21.4	6.5	7.1	8.0	7.2	5.9	4.3
July	35.0	276.1	311.1	64.5	375.6	18.4	6.2	6.7	9.3	7.0	5.1	4.1
August	36.0	285.4	321.3	74.4	395.8	18.9	6.3	6.8	10.8	7.3	5.3	4.3
FEMALES												
1998												
June	34.3	175.0	209.3	111.7	321.0	31.6	7.9	9.0	6.5	7.9	5.4	2.6
July	36.8	174.7	211.5	105.0	316.5	33.6	7.8	9.0	6.1	7.8	5.7	2.5
August	33.9	172.6	206.6	101.0	307.6	31.3	7.7	8.8	5.8	7.5	5.3	2.5
September	33.8	177.4	211.1	106.6	317.7	31.5	7.9	9.0	6.1	7.8	5.3	2.6
October	32.9	159.5	192.3	106.4	298.8	31.5	7.2	8.3	6.0	7.3	5.1	2.3
November	32.9	168.0	200.8	113.8	314.6	29.8	7.6	8.7	6.5	7.8	5.1	2.4
December	29.9	164.9	194.8	100.1	294.9	27.2	7.4	8.3	5.8	7.2	4.6	2.4
1999												
January	28.5	165.1	193.7	100.4	294.1	26.0	7.4	8.3	5.8	7.2	4.4	2.4
February	30.1	153.8	183.9	106.2	290.1	28.0	7.0	7.9	6.1	7.1	4.7	2.2
March	28.3	161.4	189.7	116.5	306.2	25.9	7.4	8.2	6.7	7.6	4.4	2.3
April	31.4	158.7	190.2	107.7	297.9	26.5	7.2	8.2	6.1	7.3	4.9	2.3
May	31.9	152.1	184.0	113.4	297.3	27.7	6.9	8.0	6.4	7.3	4.9	2.2
June	29.5	155.0	184.5	108.7	293.2	25.5	7.0	7.9	6.2	7.2	4.5	2.2
July	30.5	140.5	171.0	114.4	285.4	26.2	6.4	7.4	6.4	7.0	4.7	2.0
August	29.8	145.9	175.7	111.0	286.8	26.0	6.6	7.6	6.2	7.0	4.6	2.1
PERSONS												
1998												
June	84.3	514.7	599.0	168.6	767.6	27.5	7.7	8.6	7.1	8.2	6.4	3.8
July	87.9	514.6	602.5	162.2	764.8	29.4	7.7	8.6	6.9	8.2	6.7	3.8
August	85.8	503.5	589.4	166.6	756.0	28.1	7.5	8.4	7.0	8.1	6.5	3.7
September	86.3	506.2	592.5	161.6	754.1	28.6	7.5	8.4	6.8	8.0	6.6	3.8
October	79.7	473.2	552.9	163.2	716.1	27.0	7.1	7.9	6.7	7.6	6.0	3.5
November	79.8	491.6	571.4	171.2	742.6	26.4	7.4	8.2	7.1	7.9	6.0	3.6
December	74.4	480.9	555.3	154.5	709.8	24.8	7.2	8.0	6.4	7.6	5.6	3.5
1999												
January	71.2	478.8	550.0	153.9	703.9	24.1	7.2	7.9	6.4	7.5	5.4	3.5
February	70.0	463.4	533.4	163.2	696.5	23.5	6.9	7.6	6.7	7.4	5.3	3.4
March	70.7	447.5	518.3	177.2	695.5	24.1	6.7	7.4	7.3	7.4	5.3	3.3
April	74.1	462.2	536.3	170.8	707.0	24.2	6.9	7.7	7.0	7.5	5.6	3.4
May	69.8	450.8	520.6	181.4	702.0	23.3	6.8	7.5	7.4	7.5	5.3	3.3
June	69.9	445.5	515.4	164.2	679.6	23.0	6.7	7.4	6.7	7.2	5.2	3.3
July	65.5	416.6	482.1	179.0	661.1	21.4	6.2	6.9	7.2	7.0	4.9	3.0
August	65.8	431.3	497.1	185.5	682.6	21.6	6.4	7.1	7.5	7.2	4.9	3.2

UNEMPLOYED PERSONS: Trend(a)

Month	NUMBER OF UNEMPLOYED PERSONS.....					UNEMPLOYMENT RATE.....					UNEMPLOYMENT TO POPULATION RATIO	
	Aged 15-19 looking for f/t work	Aged 20 and over looking for f/t work	Total looking for f/t work	Looking for p/t work	Total	Aged 15-19 looking for f/t work	Aged 20 and over looking for f/t work	Total looking for f/t work	Looking for p/t work	Total	Aged 15-19 looking for f/t work	Aged 20 and over looking for f/t work
	'000	'000	'000	'000	'000	%	%	%	%	%	%	%
MALES												
1998												
June	50.6	333.5	384.0	58.4	442.4	25.9	7.5	8.2	9.1	8.3	7.5	5.1
July	50.9	333.5	384.4	58.8	443.2	26.1	7.5	8.2	9.1	8.4	7.6	5.1
August	50.9	331.6	382.5	58.8	441.2	26.1	7.4	8.2	9.1	8.3	7.6	5.0
September	50.1	328.4	378.5	58.2	436.7	25.9	7.3	8.1	8.9	8.2	7.4	5.0
October	48.6	324.1	372.7	57.0	429.7	25.2	7.3	8.0	8.6	8.1	7.2	4.9
November	46.6	319.2	365.8	55.8	421.7	24.4	7.2	7.9	8.4	7.9	6.9	4.8
December	44.6	314.6	359.2	55.5	414.8	23.5	7.1	7.7	8.2	7.8	6.6	4.7
1999												
January	43.1	310.4	353.5	56.2	409.8	22.9	7.0	7.6	8.3	7.7	6.4	4.7
February	42.1	306.1	348.2	57.6	405.8	22.5	6.9	7.5	8.4	7.6	6.2	4.6
March	41.3	301.6	342.9	59.4	402.3	22.1	6.8	7.4	8.6	7.5	6.1	4.5
April	40.5	297.0	337.6	61.1	398.6	21.7	6.6	7.3	8.8	7.5	6.0	4.4
May	39.5	292.9	332.4	62.8	395.3	21.1	6.6	7.1	9.0	7.4	5.8	4.4
June	38.4	289.1	327.5	64.5	392.0	20.4	6.5	7.0	9.3	7.3	5.6	4.3
July	37.2	285.6	322.8	66.3	389.1	19.7	6.4	6.9	9.5	7.3	5.5	4.3
August	36.3	282.9	319.2	67.8	387.0	19.2	6.3	6.8	9.8	7.2	5.3	4.2
FEMALES												
1998												
June	35.8	175.7	211.5	103.5	315.1	32.4	7.9	9.1	6.0	7.8	5.6	2.6
July	35.2	174.6	209.8	104.9	314.7	32.4	7.9	9.0	6.1	7.7	5.5	2.5
August	34.5	173.0	207.5	106.0	313.5	32.1	7.8	8.9	6.1	7.7	5.4	2.5
September	33.7	170.8	204.6	106.1	310.7	31.4	7.7	8.8	6.1	7.6	5.3	2.5
October	32.7	168.4	201.2	105.8	307.0	30.5	7.6	8.6	6.1	7.5	5.1	2.4
November	31.6	166.0	197.6	105.5	303.0	29.3	7.5	8.5	6.1	7.4	4.9	2.4
December	30.5	163.9	194.4	105.5	299.9	28.2	7.4	8.4	6.1	7.4	4.7	2.4
1999												
January	29.9	162.1	192.0	106.2	298.2	27.3	7.3	8.3	6.1	7.3	4.6	2.3
February	29.7	160.5	190.2	107.2	297.4	26.8	7.3	8.2	6.2	7.3	4.6	2.3
March	29.8	158.7	188.5	108.7	297.2	26.6	7.2	8.1	6.2	7.3	4.6	2.3
April	30.2	156.2	186.4	110.3	296.7	26.5	7.1	8.0	6.3	7.3	4.7	2.3
May	30.4	153.4	183.8	111.5	295.3	26.5	7.0	7.9	6.3	7.2	4.7	2.2
June	30.5	150.5	181.0	112.0	293.0	26.3	6.8	7.8	6.3	7.2	4.7	2.2
July	30.5	147.6	178.1	112.2	290.3	26.2	6.7	7.7	6.3	7.1	4.7	2.1
August	30.3	145.5	175.8	112.0	287.8	26.0	6.6	7.6	6.3	7.0	4.7	2.1
PERSONS												
1998												
June	86.3	509.2	595.6	161.9	757.5	28.2	7.6	8.5	6.8	8.1	6.6	3.8
July	86.1	508.1	594.3	163.7	757.9	28.3	7.6	8.5	6.9	8.1	6.6	3.8
August	85.4	504.5	590.0	164.7	754.7	28.3	7.5	8.4	6.9	8.0	6.5	3.7
September	83.9	499.2	583.1	164.3	747.4	27.8	7.5	8.3	6.9	8.0	6.4	3.7
October	81.4	492.5	573.9	162.8	736.7	27.1	7.4	8.2	6.8	7.8	6.2	3.6
November	78.2	485.2	563.4	161.3	724.7	26.1	7.3	8.1	6.7	7.7	5.9	3.6
December	75.2	478.4	553.6	161.0	714.7	25.2	7.2	7.9	6.7	7.6	5.7	3.5
1999												
January	73.0	472.5	545.5	162.4	707.9	24.5	7.1	7.8	6.7	7.5	5.5	3.5
February	71.7	466.7	538.4	164.9	703.3	24.1	7.0	7.7	6.8	7.5	5.4	3.4
March	71.1	460.3	531.4	168.1	699.5	23.8	6.9	7.6	6.9	7.4	5.4	3.4
April	70.7	453.3	523.9	171.4	695.3	23.5	6.8	7.5	7.0	7.4	5.3	3.3
May	69.9	446.3	516.3	174.3	690.6	23.2	6.7	7.4	7.1	7.3	5.3	3.3
June	68.9	439.6	508.5	176.5	685.0	22.7	6.6	7.3	7.2	7.3	5.2	3.2
July	67.7	433.3	501.0	178.5	679.4	22.2	6.5	7.2	7.2	7.2	5.1	3.2
August	66.6	428.4	495.0	179.9	674.8	21.8	6.4	7.1	7.3	7.1	5.0	3.1

(a) Trend estimates for February 1999 to July 1999 have been revised.

PERSONS AGED 15 TO 19, Education and Labour Force: **Original**—August 1999

EMPLOYED.....

UNEMPLOYED.....

	<i>Full time</i>	<i>Part time</i>	<i>Total</i>	<i>Looking for f/t work</i>	<i>Looking for p/t work</i>	<i>Total</i>	<i>Labour force</i>	<i>Not in labour force</i>	<i>Civilian population aged 15–19</i>	<i>Unemp- loyment rate</i>	<i>Partic- ipation rate</i>
	'000	'000	'000	'000	'000	'000	'000	'000	'000	%	%
ATTENDING NEITHER SCHOOL NOR A TERTIARY EDUCATIONAL INSTITUTION FULL TIME											
Males	141.4	29.4	170.8	27.6	* 2.7	30.3	201.1	18.9	220.1	15.1	91.4
Females	75.4	37.2	112.6	22.7	* 2.3	24.9	137.5	26.3	163.8	18.1	84.0
Persons	216.8	66.6	283.4	50.3	5.0	55.3	338.7	45.2	383.9	16.3	88.2
ATTENDING A TERTIARY EDUCATIONAL INSTITUTION FULL TIME											
Males	* 1.9	42.6	44.6	* 3.0	8.0	11.0	55.6	44.7	100.3	19.8	55.4
Females	* 2.0	66.5	68.5	* 1.5	7.2	8.8	77.3	48.6	125.9	11.3	61.4
Persons	* 4.0	109.1	113.1	4.5	15.2	19.8	132.9	93.3	226.2	14.9	58.7
ATTENDING SCHOOL											
Males	* 0.3	89.3	89.6	* 1.6	22.9	24.5	114.2	248.1	362.2	21.5	31.5
Females	* 0.3	124.6	124.9	* 2.2	23.6	25.9	150.8	210.2	361.0	17.2	41.8
Persons	* 0.6	213.9	214.5	* 3.8	46.6	50.4	264.9	458.3	723.3	19.0	36.6
TOTAL											
Males	143.7	161.3	305.0	32.2	33.7	65.9	370.9	311.7	682.6	17.8	54.3
Females	77.7	228.3	306.1	26.4	33.1	59.5	365.6	285.1	650.7	16.3	56.2
Persons	221.4	389.6	611.0	58.7	66.8	125.4	736.5	596.9	1 333.3	17.0	55.2

LABOUR FORCE STATUS (AGED 15 & OVER), States & Territories: **Original**—August 1999

EMPLOYED.....

UNEMPLOYED.....

	Full time	Part time	Total	Looking for f/t work	Looking for p/t work	Total	Labour force	Not in labour force	Civilian population aged 15 and over	Unemp- loyment rate	Partic- ipation rate
	'000	'000	'000	'000	'000	'000	'000	'000	'000	%	%
MALES											
New South Wales	1 464.1	198.4	1 662.6	95.9	19.4	115.3	1 777.8	721.6	2 499.4	6.5	71.1
Victoria	1 072.4	153.3	1 225.7	80.3	18.1	98.4	1 324.2	518.2	1 842.3	7.4	71.9
Queensland	813.0	111.7	924.7	62.4	15.4	77.8	1 002.5	364.3	1 366.8	7.8	73.3
South Australia	315.4	56.0	371.3	31.8	4.8	36.5	407.9	178.2	586.0	9.0	69.6
Western Australia	446.2	66.9	513.1	30.0	6.2	36.2	549.3	183.2	732.5	6.6	75.0
Tasmania	96.4	12.8	109.2	10.7	* 0.5	11.2	120.4	59.8	180.2	9.3	66.8
Northern Territory	47.7	7.3	54.9	* 0.8	* 0.3	1.0	55.9	16.9	72.9	1.8	76.8
Australian Capital Territory	68.6	14.4	83.1	4.5	1.8	6.3	89.4	25.7	115.1	7.1	77.7
Australia	4 323.8	620.8	4 944.5	316.4	66.4	382.9	5 327.4	2 067.9	7 395.3	7.2	72.0
FEMALES											
New South Wales	723.4	513.6	1 237.1	54.9	31.8	86.7	1 323.8	1 261.2	2 584.9	6.5	51.2
Victoria	527.8	425.5	953.3	38.4	29.0	67.4	1 020.6	902.3	1 922.9	6.6	53.1
Queensland	380.5	332.4	712.9	35.3	20.2	55.4	768.4	623.5	1 391.9	7.2	55.2
South Australia	151.1	137.4	288.5	15.9	8.6	24.5	313.0	299.6	612.6	7.8	51.1
Western Australia	205.8	184.5	390.3	14.6	8.9	23.5	413.8	319.2	733.0	5.7	56.4
Tasmania	43.6	41.6	85.2	4.9	2.1	7.0	92.2	97.6	189.8	7.6	48.6
Northern Territory	27.5	15.1	42.7	1.3	* 0.7	2.1	44.7	21.4	66.1	4.6	67.6
Australian Capital Territory	49.9	27.3	77.2	1.6	1.8	3.4	80.6	41.7	122.2	4.2	65.9
Australia	2 109.6	1 677.5	3 787.1	166.8	103.1	269.9	4 057.0	3 566.6	7 623.6	6.7	53.2
PERSONS											
New South Wales	2 187.6	712.1	2 899.6	150.8	51.2	202.0	3 101.6	1 982.8	5 084.4	6.5	61.0
Victoria	1 600.2	578.8	2 179.0	118.7	47.1	165.8	2 344.8	1 420.5	3 765.3	7.1	62.3
Queensland	1 193.5	444.1	1 637.6	97.7	35.5	133.3	1 770.9	987.9	2 758.7	7.5	64.2
South Australia	466.5	193.4	659.9	47.6	13.4	61.0	720.9	477.8	1 198.7	8.5	60.1
Western Australia	652.0	251.4	903.4	44.6	15.1	59.7	963.1	502.5	1 465.6	6.2	65.7
Tasmania	140.0	54.4	194.3	15.6	2.7	18.3	212.6	157.4	370.0	8.6	57.5
Northern Territory	75.2	22.4	97.6	2.1	1.0	3.1	100.6	38.4	139.0	3.1	72.4
Australian Capital Territory	118.5	41.7	160.2	6.1	3.6	9.7	169.9	67.4	237.3	5.7	71.6
Australia	6 433.4	2 298.2	8 731.6	483.2	169.6	652.8	9 384.4	5 634.5	15 018.9	7.0	62.5

UNEMPLOYED PERSONS—New South Wales, Victoria and Queensland: Original

Month	NUMBER OF UNEMPLOYED PERSONS.....					UNEMPLOYMENT RATE.....					UNEMPLOYMENT TO POPULATION RATIO	
	Aged 15-19 looking for f/t work	Aged 20 and over looking for f/t work	Total looking for f/t work	Looking for p/t work	Total	Aged 15-19 looking for f/t work	Aged 20 and over looking for f/t work	Total looking for f/t work	Looking for p/t work	Total	Aged 15-19 looking for f/t work	Aged 20 and over looking for f/t work
	'000	'000	'000	'000	'000	%	%	%	%	%	%	%
NEW SOUTH WALES												
1998												
June	26.6	147.3	173.8	48.3	222.1	27.3	6.5	7.4	6.5	7.2	6.1	3.2
July	25.1	148.8	173.8	41.0	214.8	25.9	6.4	7.2	5.8	6.9	5.8	3.3
August	24.4	153.5	177.9	41.7	219.6	25.6	6.9	7.6	5.9	7.2	5.6	3.4
September	23.1	155.6	178.7	52.6	231.3	24.2	6.7	7.4	7.0	7.3	5.3	3.4
October	22.4	129.3	151.6	49.2	200.8	23.0	5.7	6.4	6.6	6.5	5.1	2.8
November	21.2	151.8	173.0	53.3	226.3	22.7	6.7	7.4	7.1	7.3	4.9	3.3
December	28.4	136.5	165.0	43.2	208.1	26.5	6.0	6.9	5.8	6.6	6.5	3.0
1999												
January	27.4	159.7	187.1	43.7	230.9	24.2	7.1	7.9	6.2	7.5	6.3	3.5
February	23.0	157.9	180.9	56.7	237.5	21.5	7.0	7.6	7.6	7.6	5.2	3.4
March	21.8	145.4	167.2	67.6	234.8	22.5	6.5	7.1	8.6	7.5	5.0	3.2
April	20.5	137.5	158.1	55.9	214.0	21.1	6.1	6.8	7.2	6.9	4.7	3.0
May	19.0	131.2	150.2	50.0	200.1	20.1	5.8	6.4	6.5	6.4	4.3	2.8
June	15.8	128.1	143.9	45.7	189.6	18.1	5.7	6.1	5.9	6.1	3.6	2.8
July	14.6	121.8	136.4	41.4	177.8	14.4	5.3	5.7	5.5	5.7	3.3	2.6
August	16.8	134.0	150.8	51.2	202.0	19.5	5.9	6.4	6.7	6.5	3.8	2.9
VICTORIA												
1998												
June	17.2	128.5	145.7	43.2	188.9	31.9	7.7	8.5	6.9	8.0	5.4	3.8
July	17.6	125.7	143.3	42.7	186.0	29.5	7.5	8.2	7.0	7.9	5.5	3.7
August	17.5	120.3	137.8	47.5	185.4	31.5	7.2	8.0	7.7	7.9	5.5	3.5
September	18.7	127.5	146.2	50.4	196.6	32.7	7.5	8.3	7.9	8.2	5.8	3.8
October	15.1	113.6	128.7	44.6	173.3	26.5	6.8	7.5	7.3	7.4	4.7	3.3
November	16.7	116.4	133.1	41.1	174.2	28.2	7.1	7.8	6.6	7.5	5.2	3.4
December	18.6	110.6	129.2	46.3	175.4	24.8	6.6	7.4	7.5	7.4	5.8	3.2
1999												
January	19.8	121.3	141.2	41.0	182.2	27.8	7.3	8.1	7.1	7.9	6.2	3.6
February	16.5	132.6	149.1	48.3	197.4	24.3	7.8	8.4	8.2	8.4	5.1	3.9
March	14.7	115.3	130.0	49.3	179.3	23.6	6.9	7.5	8.0	7.6	4.6	3.4
April	17.0	120.2	137.3	47.8	185.1	28.7	7.2	8.0	7.6	7.9	5.3	3.5
May	13.8	118.6	132.3	49.9	182.2	24.9	7.1	7.7	7.9	7.8	4.3	3.5
June	13.5	118.4	131.9	36.6	168.4	24.4	7.1	7.6	5.7	7.1	4.2	3.4
July	11.9	107.5	119.4	50.1	169.4	20.4	6.4	6.8	7.9	7.1	3.7	3.1
August	11.3	107.4	118.7	47.1	165.8	20.4	6.5	6.9	7.5	7.1	3.5	3.1
QUEENSLAND												
1998												
June	16.4	101.9	118.3	32.3	150.5	26.5	8.3	9.2	6.9	8.6	6.5	4.2
July	16.4	104.3	120.7	28.8	149.5	25.2	8.4	9.3	6.4	8.5	6.5	4.3
August	15.6	98.6	114.2	31.4	145.6	26.9	8.1	8.9	6.8	8.4	6.1	4.0
September	16.5	103.5	120.1	35.2	155.2	26.3	8.3	9.2	7.5	8.8	6.5	4.2
October	15.2	97.0	112.2	34.0	146.2	24.8	7.8	8.6	7.2	8.2	6.0	3.9
November	16.3	89.0	105.3	33.6	138.9	27.0	7.1	8.1	7.2	7.8	6.4	3.6
December	19.8	97.8	117.6	28.5	146.0	27.5	7.8	8.8	6.2	8.2	7.8	4.0
1999												
January	18.4	101.2	119.6	33.2	152.8	26.0	8.1	9.0	7.6	8.7	7.2	4.1
February	20.4	98.9	119.2	39.3	158.6	29.7	8.0	9.1	8.5	8.9	7.9	4.0
March	17.3	90.6	107.9	37.1	145.0	27.5	7.3	8.3	7.9	8.2	6.7	3.7
April	16.9	90.9	107.7	34.3	142.0	24.8	7.3	8.2	7.2	7.9	6.6	3.7
May	17.8	92.8	110.5	35.5	146.1	27.7	7.5	8.5	7.3	8.2	6.9	3.7
June	16.9	88.9	105.9	35.8	141.6	25.8	7.1	8.0	7.5	7.9	6.6	3.6
July	15.8	84.3	100.0	33.0	133.0	24.0	6.7	7.6	7.1	7.5	6.1	3.4
August	12.5	85.2	97.7	35.5	133.3	19.6	6.9	7.6	7.4	7.5	4.8	3.4

UNEMPLOYED PERSONS—South Australia, Western Australia and Tasmania: **Original**

Month	NUMBER OF UNEMPLOYED PERSONS.....					UNEMPLOYMENT RATE.....					UNEMPLOYMENT TO POPULATION RATIO	
	Aged 15-19 looking for f/t work	Aged 20 and over looking for f/t work	Total looking for f/t work	Looking for p/t work	Total	Aged 15-19 looking for f/t work	Aged 20 and over looking for f/t work	Total looking for f/t work	Looking for p/t work	Total	Aged 15-19 looking for f/t work	Aged 20 and over looking for f/t work
	'000	'000	'000	'000	'000	%	%	%	%	%	%	%
SOUTH AUSTRALIA												
1998												
June	6.4	50.4	56.8	11.1	68.0	29.8	10.3	11.1	5.8	9.6	6.5	4.6
July	7.9	48.7	56.7	12.2	68.9	35.8	9.8	10.9	6.6	9.8	8.0	4.5
August	8.3	52.9	61.3	10.4	71.7	36.9	10.6	11.7	5.5	10.1	8.4	4.9
September	8.4	53.0	61.4	10.5	72.0	36.8	10.4	11.6	5.5	9.9	8.5	4.9
October	7.5	44.9	52.4	12.2	64.6	35.1	9.0	10.1	6.2	9.0	7.5	4.1
November	8.2	49.7	57.9	10.1	67.9	36.0	9.9	11.0	5.1	9.4	8.2	4.6
December	7.6	48.4	56.0	10.8	66.8	31.5	9.6	10.6	5.3	9.1	7.6	4.4
1999												
January	8.7	53.7	62.4	12.5	74.9	35.5	10.7	11.9	6.5	10.4	8.7	4.9
February	7.0	49.3	56.2	12.6	68.9	30.0	9.8	10.7	6.4	9.5	7.0	4.5
March	8.1	44.2	52.4	13.9	66.3	36.3	8.8	10.0	6.9	9.1	8.1	4.0
April	6.1	41.8	47.9	11.3	59.2	27.2	8.5	9.3	5.6	8.3	6.1	3.8
May	7.6	39.8	47.3	16.4	63.7	31.1	8.0	9.1	8.1	8.8	7.5	3.6
June	7.4	37.2	44.6	11.5	56.0	31.9	7.6	8.7	5.5	7.8	7.3	3.4
July	5.9	34.9	40.8	13.6	54.4	24.3	7.1	7.9	6.6	7.6	5.9	3.2
August	6.8	40.8	47.6	13.4	61.0	31.0	8.3	9.3	6.5	8.5	6.8	3.7
WESTERN AUSTRALIA												
1998												
June	8.1	46.5	54.6	13.1	67.8	22.7	7.0	7.8	5.2	7.1	6.1	3.6
July	7.7	44.0	51.7	14.0	65.7	22.0	6.6	7.3	5.5	6.8	5.7	3.4
August	7.0	43.5	50.5	12.9	63.4	20.3	6.5	7.2	5.1	6.7	5.2	3.3
September	5.6	47.9	53.5	15.9	69.4	17.0	7.1	7.6	6.0	7.1	4.1	3.7
October	6.2	44.3	50.5	11.2	61.7	19.4	6.7	7.2	4.3	6.5	4.6	3.4
November	6.8	44.4	51.1	13.1	64.2	20.7	6.7	7.3	5.0	6.7	5.0	3.4
December	9.1	45.1	54.2	16.5	70.7	22.0	6.7	7.5	6.4	7.2	6.8	3.4
1999												
January	9.0	48.2	57.2	16.8	74.0	21.8	7.2	8.1	6.8	7.7	6.7	3.7
February	8.0	50.4	58.4	20.8	79.2	22.0	7.6	8.3	7.9	8.2	5.9	3.8
March	5.9	41.9	47.8	22.6	70.4	18.0	6.4	7.0	8.1	7.3	4.3	3.2
April	7.1	43.2	50.3	19.9	70.2	18.4	6.6	7.2	7.3	7.3	5.2	3.3
May	7.6	39.9	47.5	13.9	61.4	21.6	6.1	6.9	5.2	6.4	5.6	3.0
June	8.0	39.7	47.7	12.8	60.5	21.5	6.0	6.9	4.8	6.3	5.8	3.0
July	7.5	35.6	43.1	15.1	58.2	19.3	5.4	6.2	5.7	6.0	5.5	2.7
August	7.7	36.9	44.6	15.1	59.7	20.7	5.6	6.4	5.7	6.2	5.7	2.8
TASMANIA												
1998												
June	2.5	16.5	19.0	3.6	22.6	27.9	11.4	12.4	5.7	10.4	7.2	4.9
July	2.8	16.0	18.9	4.2	23.0	29.6	11.1	12.3	6.5	10.6	8.2	4.8
August	2.3	17.5	19.8	4.9	24.7	26.7	12.2	13.0	7.5	11.4	6.7	5.2
September	3.0	15.7	18.7	3.4	22.1	35.5	10.9	12.3	5.2	10.1	8.7	4.7
October	2.4	16.5	18.9	3.8	22.8	28.0	11.4	12.3	5.9	10.4	7.0	4.9
November	2.5	14.6	17.1	3.5	20.6	29.3	10.1	11.2	5.6	9.6	7.3	4.4
December	3.9	14.9	18.8	5.3	24.2	40.2	10.2	12.1	8.4	11.0	11.4	4.4
1999												
January	3.9	17.4	21.3	3.1	24.4	35.6	11.9	13.6	5.3	11.3	11.4	5.2
February	3.3	16.4	19.7	3.9	23.6	30.6	11.3	12.7	6.4	10.9	9.6	4.9
March	2.6	15.7	18.3	5.2	23.5	27.8	10.8	11.8	8.3	10.8	7.4	4.7
April	2.4	13.7	16.1	4.7	20.8	24.0	9.5	10.4	7.3	9.5	6.8	4.1
May	2.7	14.0	16.7	4.3	21.1	26.9	9.7	10.8	6.9	9.7	7.9	4.2
June	2.6	13.6	16.2	4.1	20.3	30.1	9.5	10.6	6.4	9.4	7.5	4.1
July	1.9	13.1	15.0	3.7	18.7	24.9	9.1	9.8	6.0	8.7	5.4	3.9
August	1.9	13.7	15.6	2.7	18.3	24.2	9.3	10.0	4.7	8.6	5.6	4.1

UNEMPLOYED PERSONS—Northern Territory and Australian Capital Territory: **Original**

Month	NUMBER OF UNEMPLOYED PERSONS.....					UNEMPLOYMENT RATE.....					UNEMPLOYMENT TO POPULATION RATIO	
	<i>Aged 15-19 looking for f/t work</i>	<i>Aged 20 and over looking for f/t work</i>	<i>Total looking for f/t work</i>	<i>Looking for p/t work</i>	<i>Total</i>	<i>Aged 15-19 looking for f/t work</i>	<i>Aged 20 and over looking for f/t work</i>	<i>Total looking for f/t work</i>	<i>Looking for p/t work</i>	<i>Total</i>	<i>Aged 15-19 looking for f/t work</i>	<i>Aged 20 and over looking for f/t work</i>
	'000	'000	'000	'000	'000	%	%	%	%	%	%	%
NORTHERN TERRITORY												
1998												
June	* 0.5	2.8	3.4	* 0.5	3.9	* 15.5	4.0	4.5	* 2.6	4.1	* 3.7	2.3
July	* 0.3	3.6	3.9	* 0.9	4.7	* 8.0	4.8	4.9	* 4.9	4.9	* 2.1	2.9
August	* 0.4	2.7	3.1	* 0.5	3.6	* 11.5	3.7	4.1	* 2.4	3.7	* 2.8	2.2
September	* 0.9	3.3	4.2	* 0.7	4.8	* 22.5	4.2	5.1	* 3.5	4.8	* 6.0	2.7
October	* 0.4	1.8	2.2	* 0.9	3.0	* 10.3	2.5	2.8	* 3.8	3.0	* 2.5	1.5
November	* 0.8	2.9	3.7	* 0.9	4.7	* 20.5	4.0	4.8	* 4.4	4.7	* 5.7	2.4
December	* 0.9	1.9	2.8	* 0.5	3.3	* 21.4	2.6	3.5	* 2.6	3.3	* 6.1	1.6
1999												
January	* 0.5	2.7	3.2	* 1.2	4.4	* 14.1	3.7	4.2	* 6.7	4.7	* 3.4	2.2
February	* 0.8	2.4	3.2	* 0.8	4.1	* 29.4	3.2	4.2	* 3.7	4.1	* 5.9	1.9
March	* 0.8	3.3	4.1	1.5	5.6	* 26.8	4.3	5.2	6.8	5.6	* 5.8	2.6
April	* 0.3	2.8	3.1	1.0	4.1	* 12.4	3.8	4.1	4.3	4.1	* 2.3	2.3
May	* 0.4	2.2	2.6	1.4	3.9	* 14.8	3.0	3.4	5.3	3.9	* 2.6	1.8
June	* 0.5	2.2	2.7	1.0	3.7	* 15.2	3.1	3.7	4.4	3.8	* 3.5	1.8
July	* 0.3	2.1	2.4	1.4	3.8	* 8.0	3.1	3.3	6.7	4.0	* 2.0	1.7
August	* 0.6	1.5	2.1	1.0	3.1	* 15.5	2.1	2.7	4.2	3.1	* 3.9	1.2
AUSTRALIAN CAPITAL TERRITORY												
1998												
June	1.3	6.0	7.3	2.6	9.9	40.7	5.0	5.9	5.9	5.9	5.6	2.8
July	1.1	7.9	9.0	2.7	11.7	32.5	6.4	7.1	6.1	6.9	4.8	3.7
August	1.1	6.4	7.5	3.0	10.6	39.5	5.5	6.3	6.6	6.4	4.8	3.0
September	1.1	6.8	7.9	2.9	10.8	35.4	5.8	6.5	6.5	6.5	4.9	3.2
October	1.2	5.4	6.7	3.6	10.3	33.0	4.7	5.6	8.0	6.2	5.3	2.6
November	1.1	5.8	6.9	3.0	9.9	34.8	4.9	5.7	6.9	6.0	4.6	2.7
December	1.5	4.5	6.0	3.7	9.7	31.5	3.8	4.8	8.7	5.8	6.3	2.1
1999												
January	1.2	6.4	7.6	3.2	10.8	30.6	5.3	6.2	7.9	6.6	5.2	3.0
February	* 0.6	6.6	7.2	4.4	11.6	* 19.3	5.4	5.7	10.1	6.9	* 2.6	3.1
March	1.0	6.0	7.0	4.6	11.7	28.9	5.1	5.8	10.2	7.0	4.1	2.8
April	* 0.9	6.1	7.1	2.8	9.8	* 26.7	5.2	5.8	6.2	5.9	* 3.9	2.9
May	* 0.7	5.4	6.1	4.1	10.2	* 20.9	4.5	4.9	9.0	6.0	* 2.8	2.6
June	* 0.6	4.3	4.9	3.3	8.3	* 22.9	3.6	4.1	7.0	4.9	* 2.7	2.0
July	* 0.6	4.9	5.5	3.2	8.7	* 13.5	4.1	4.4	7.2	5.1	* 2.6	2.3
August	* 1.0	5.1	6.1	3.6	9.7	* 25.5	4.2	4.9	8.0	5.7	* 4.3	2.4

LABOUR FORCE STATUS (AGED 15 AND OVER)—New South Wales(a)

SEASONALLY ADJUSTED.....

TREND.....

Month	Employed full time '000	Total employed '000	Total unemployed '000	Unemp- loyment rate %	Partic- ipation rate %	Employed full time '000	Total employed '000	Total unemployed '000	Unemp- loyment rate %	Partic- ipation rate %	Civilian population aged 15 and over '000
MALES											
1998											
June	1 450.1	1 629.4	136.8	7.7	71.9	1 449.8	1 626.3	134.5	7.6	71.7	2 457.0
July	1 456.8	1 639.0	135.0	7.6	72.1	1 452.9	1 630.0	133.9	7.6	71.7	2 459.7
August	1 448.1	1 613.4	137.7	7.9	71.1	1 454.3	1 633.2	132.4	7.5	71.7	2 462.4
September	1 458.2	1 639.4	130.8	7.4	71.8	1 453.7	1 635.2	130.4	7.4	71.6	2 465.2
October	1 458.2	1 652.8	115.0	6.5	71.6	1 451.6	1 636.7	128.3	7.3	71.5	2 468.4
November	1 447.3	1 634.9	133.4	7.5	71.5	1 449.1	1 638.3	126.7	7.2	71.4	2 471.5
December	1 443.9	1 635.5	124.0	7.0	71.1	1 447.5	1 640.4	125.8	7.1	71.4	2 474.7
1999											
January	1 440.2	1 635.3	129.6	7.3	71.2	1 447.6	1 643.6	125.0	7.1	71.4	2 477.5
February	1 452.3	1 648.1	121.2	6.8	71.3	1 449.8	1 648.2	123.3	7.0	71.4	2 480.3
March	1 458.5	1 665.8	121.3	6.8	72.0	1 454.2	1 654.3	120.6	6.8	71.5	2 483.1
April	1 458.5	1 656.7	119.5	6.7	71.4	1 460.3	1 661.4	117.3	6.6	71.5	2 486.6
May	1 469.0	1 666.2	112.4	6.3	71.4	1 466.7	1 667.7	114.7	6.4	71.6	2 490.0
June	1 464.8	1 671.3	110.5	6.2	71.5	1 472.9	1 672.9	112.9	6.3	71.6	2 493.4
July	1 483.6	1 685.0	108.0	6.0	71.8	1 478.8	1 677.3	111.7	6.2	71.7	2 496.4
August	1 488.9	1 677.3	117.8	6.6	71.8	1 483.5	1 680.3	111.4	6.2	71.7	2 499.4
FEMALES											
1998											
June	737.5	1 239.4	96.7	7.2	52.5	736.9	1 238.4	95.0	7.1	52.4	2 545.9
July	760.5	1 251.0	95.9	7.1	52.8	742.7	1 243.1	95.5	7.1	52.5	2 548.5
August	740.5	1 238.6	93.1	7.0	52.2	746.0	1 245.5	96.0	7.2	52.6	2 551.1
September	750.4	1 255.6	96.5	7.1	52.9	746.4	1 246.5	95.7	7.1	52.6	2 553.7
October	745.1	1 251.8	92.2	6.9	52.6	745.0	1 246.9	94.7	7.1	52.5	2 556.6
November	730.5	1 224.5	104.7	7.9	51.9	742.5	1 246.9	93.3	7.0	52.4	2 559.6
December	745.2	1 255.9	87.5	6.5	52.4	739.7	1 246.8	92.2	6.9	52.3	2 562.5
1999											
January	738.4	1 249.3	85.6	6.4	52.0	737.5	1 246.9	91.8	6.9	52.2	2 565.1
February	743.7	1 257.9	87.5	6.5	52.4	736.3	1 247.4	91.8	6.9	52.2	2 567.7
March	732.3	1 237.7	98.5	7.4	52.0	736.3	1 248.2	91.9	6.9	52.1	2 570.2
April	726.9	1 244.3	96.6	7.2	52.1	737.6	1 249.6	92.1	6.9	52.1	2 573.2
May	736.0	1 252.5	91.1	6.8	52.2	739.6	1 251.0	91.9	6.8	52.1	2 576.1
June	754.6	1 257.8	89.5	6.6	52.2	742.1	1 253.2	91.1	6.8	52.1	2 579.1
July	749.6	1 257.4	83.3	6.2	51.9	744.4	1 255.5	90.3	6.7	52.1	2 582.0
August	739.2	1 255.9	95.0	7.0	52.3	746.1	1 257.3	89.5	6.6	52.1	2 584.9
PERSONS											
1998											
June	2 187.6	2 868.8	233.5	7.5	62.0	2 186.7	2 864.6	229.6	7.4	61.8	5 002.9
July	2 217.3	2 890.0	230.9	7.4	62.3	2 195.6	2 873.1	229.4	7.4	62.0	5 008.2
August	2 188.6	2 851.9	230.8	7.5	61.5	2 200.2	2 878.7	228.4	7.3	62.0	5 013.5
September	2 208.6	2 895.0	227.3	7.3	62.2	2 200.0	2 881.7	226.1	7.3	61.9	5 018.9
October	2 203.3	2 904.6	207.2	6.7	61.9	2 196.6	2 883.6	222.9	7.2	61.8	5 025.0
November	2 177.8	2 859.4	238.2	7.7	61.6	2 191.6	2 885.2	220.0	7.1	61.7	5 031.1
December	2 189.2	2 891.5	211.5	6.8	61.6	2 187.2	2 887.2	218.0	7.0	61.6	5 037.2
1999											
January	2 178.6	2 884.6	215.2	6.9	61.5	2 185.1	2 890.5	216.8	7.0	61.6	5 042.6
February	2 196.0	2 906.0	208.7	6.7	61.7	2 186.1	2 895.6	215.0	6.9	61.6	5 048.0
March	2 190.9	2 903.5	219.8	7.0	61.8	2 190.5	2 902.5	212.5	6.8	61.6	5 053.4
April	2 185.4	2 901.0	216.1	6.9	61.6	2 197.9	2 911.0	209.4	6.7	61.7	5 059.8
May	2 204.9	2 918.7	203.5	6.5	61.6	2 206.3	2 918.7	206.6	6.6	61.7	5 066.1
June	2 219.4	2 929.1	200.0	6.4	61.7	2 214.9	2 926.1	204.0	6.5	61.7	5 072.5
July	2 233.2	2 942.5	191.3	6.1	61.7	2 223.2	2 932.8	202.0	6.4	61.7	5 078.5
August	2 228.1	2 933.2	212.8	6.8	61.9	2 229.6	2 937.6	201.0	6.4	61.7	5 084.4

(a) Trend estimates for February 1999 to July 1999 have been revised.

LABOUR FORCE STATUS (AGED 15 AND OVER)—Victoria(a)

SEASONALLY ADJUSTED.....

TREND.....

Month	Employed full time '000	Total employed '000	Total unemployed '000	Unemp- loyment rate %	Partic- ipation rate %	Employed full time '000	Total employed '000	Total unemployed '000	Unemp- loyment rate %	Partic- ipation rate %	Civilian population aged 15 and over '000
MALES											
1998											
June	1 057.1	1 218.4	107.8	8.1	73.2	1 062.2	1 220.4	109.2	8.2	73.4	1 810.9
July	1 061.0	1 218.9	108.5	8.2	73.2	1 063.0	1 222.2	107.6	8.1	73.4	1 812.8
August	1 063.3	1 218.3	106.1	8.0	73.0	1 063.6	1 222.8	105.7	8.0	73.2	1 814.8
September	1 073.6	1 237.5	102.6	7.7	73.8	1 063.4	1 222.7	103.9	7.8	73.0	1 816.7
October	1 064.1	1 219.8	102.3	7.7	72.7	1 063.3	1 222.4	102.2	7.7	72.8	1 819.2
November	1 057.6	1 218.7	101.5	7.7	72.5	1 064.1	1 223.0	100.7	7.6	72.7	1 821.6
December	1 061.7	1 218.9	100.9	7.6	72.4	1 065.7	1 223.9	100.1	7.6	72.6	1 824.1
1999											
January	1 060.0	1 222.8	99.1	7.5	72.4	1 067.5	1 225.3	100.7	7.6	72.6	1 826.2
February	1 079.4	1 232.6	101.4	7.6	73.0	1 069.4	1 227.4	102.4	7.7	72.7	1 828.4
March	1 086.8	1 240.0	96.3	7.2	73.0	1 071.1	1 230.1	104.3	7.8	72.9	1 830.5
April	1 063.0	1 229.3	115.1	8.6	73.3	1 072.5	1 232.7	105.5	7.9	73.0	1 832.9
May	1 060.7	1 217.1	112.2	8.4	72.4	1 073.7	1 234.8	105.9	7.9	73.0	1 835.3
June	1 077.6	1 248.7	101.4	7.5	73.5	1 075.7	1 237.0	105.2	7.8	73.0	1 837.7
July	1 083.8	1 244.8	100.6	7.5	73.1	1 078.3	1 239.1	104.0	7.7	73.0	1 840.0
August	1 086.0	1 237.4	100.6	7.5	72.6	1 080.4	1 240.5	102.5	7.6	72.9	1 842.3
FEMALES											
1998											
June	527.5	938.8	87.9	8.6	54.3	530.9	941.8	86.9	8.4	54.4	1 892.3
July	524.0	939.4	89.2	8.7	54.3	531.1	944.2	87.2	8.5	54.4	1 894.3
August	544.6	958.7	86.6	8.3	55.1	531.1	945.4	86.5	8.4	54.4	1 896.3
September	528.3	943.4	87.7	8.5	54.3	531.3	945.4	84.7	8.2	54.3	1 898.2
October	530.9	942.3	79.6	7.8	53.8	531.7	944.7	82.1	8.0	54.0	1 900.6
November	525.8	939.1	80.7	7.9	53.6	532.2	943.4	79.2	7.7	53.7	1 902.9
December	533.0	942.6	74.0	7.3	53.4	532.2	941.7	76.7	7.5	53.5	1 905.3
1999											
January	537.7	942.9	73.0	7.2	53.3	531.7	939.9	75.0	7.4	53.2	1 907.2
February	530.8	941.0	76.9	7.6	53.3	530.5	938.5	74.1	7.3	53.0	1 909.2
March	532.1	938.8	74.8	7.4	53.0	529.0	938.3	73.9	7.3	53.0	1 911.2
April	521.6	933.0	72.2	7.2	52.5	527.5	939.4	74.0	7.3	53.0	1 913.5
May	524.2	938.4	73.7	7.3	52.8	526.7	942.1	74.2	7.3	53.0	1 915.9
June	526.8	944.6	73.0	7.2	53.1	527.1	946.0	74.3	7.3	53.2	1 918.2
July	529.2	958.1	79.5	7.7	54.0	528.2	950.4	74.4	7.3	53.4	1 920.6
August	534.5	957.6	71.5	6.9	53.5	529.9	954.6	74.3	7.2	53.5	1 922.9
PERSONS											
1998											
June	1 584.7	2 157.2	195.7	8.3	63.5	1 593.1	2 162.2	196.1	8.3	63.7	3 703.2
July	1 585.0	2 158.2	197.7	8.4	63.6	1 594.1	2 166.4	194.7	8.2	63.7	3 707.1
August	1 607.9	2 177.0	192.8	8.1	63.9	1 594.7	2 168.2	192.2	8.1	63.6	3 711.0
September	1 601.9	2 181.0	190.3	8.0	63.8	1 594.6	2 168.1	188.6	8.0	63.4	3 714.9
October	1 594.9	2 162.0	181.9	7.8	63.0	1 595.0	2 167.1	184.3	7.8	63.2	3 719.7
November	1 583.3	2 157.8	182.2	7.8	62.8	1 596.2	2 166.3	179.9	7.7	63.0	3 724.5
December	1 594.7	2 161.5	174.9	7.5	62.6	1 597.8	2 165.6	176.8	7.5	62.8	3 729.4
1999											
January	1 597.7	2 165.7	172.1	7.4	62.6	1 599.2	2 165.1	175.7	7.5	62.7	3 733.5
February	1 610.2	2 173.6	178.3	7.6	62.9	1 599.9	2 165.9	176.5	7.5	62.7	3 737.6
March	1 619.0	2 178.8	171.1	7.3	62.8	1 600.2	2 168.4	178.1	7.6	62.7	3 741.8
April	1 584.6	2 162.3	187.3	8.0	62.7	1 599.9	2 172.1	179.6	7.6	62.8	3 746.5
May	1 584.9	2 155.5	185.9	7.9	62.4	1 600.5	2 176.9	180.1	7.6	62.8	3 751.2
June	1 604.4	2 193.4	174.4	7.4	63.0	1 602.8	2 183.0	179.5	7.6	62.9	3 755.9
July	1 613.0	2 202.9	180.1	7.6	63.4	1 606.5	2 189.4	178.4	7.5	63.0	3 760.6
August	1 620.6	2 195.0	172.1	7.3	62.9	1 610.3	2 195.2	176.8	7.5	63.0	3 765.3

(a) Trend estimates for February 1999 to July 1999 have been revised.

LABOUR FORCE STATUS (AGED 15 AND OVER)—Queensland(a)

SEASONALLY ADJUSTED.....

TREND.....

Month	SEASONALLY ADJUSTED.....					TREND.....					Civilian population aged 15 and over
	Employed full time	Total employed	Total unemployed	Unemployment rate	Participation rate	Employed full time	Total employed	Total unemployed	Unemployment rate	Participation rate	
	'000	'000	'000	%	%	'000	'000	'000	%	%	'000
MALES											
1998											
June	787.5	901.1	89.3	9.0	74.1	786.7	900.0	90.7	9.2	74.1	1 336.3
July	788.7	897.6	96.8	9.7	74.3	788.3	901.6	91.8	9.2	74.2	1 338.3
August	789.1	903.5	90.0	9.1	74.1	791.2	905.2	91.9	9.2	74.4	1 340.2
September	791.7	910.3	94.7	9.4	74.9	794.9	910.0	90.6	9.1	74.6	1 342.2
October	801.3	915.5	86.9	8.7	74.6	798.8	915.3	88.2	8.8	74.6	1 344.5
November	807.5	922.6	83.1	8.3	74.7	802.2	920.0	84.9	8.5	74.6	1 346.7
December	801.5	924.2	83.3	8.3	74.7	804.4	923.7	81.9	8.1	74.5	1 349.0
1999											
January	807.0	928.9	76.9	7.6	74.4	805.7	926.0	79.8	7.9	74.4	1 351.4
February	804.4	922.2	82.2	8.2	74.2	806.3	926.9	78.9	7.8	74.3	1 353.7
March	808.3	927.6	74.0	7.4	73.9	807.1	927.1	79.1	7.9	74.2	1 356.1
April	809.3	929.8	79.8	7.9	74.3	808.6	927.0	79.8	7.9	74.1	1 358.2
May	804.3	925.9	84.7	8.4	74.3	810.9	927.0	80.5	8.0	74.1	1 360.3
June	817.5	927.5	80.6	8.0	74.0	813.3	927.3	80.9	8.0	74.0	1 362.4
July	816.5	923.0	81.5	8.1	73.6	815.6	927.7	81.2	8.0	73.9	1 364.6
August	818.8	932.7	79.2	7.8	74.0	817.8	928.4	81.0	8.0	73.9	1 366.8
FEMALES											
1998											
June	384.7	700.2	66.7	8.7	56.4	385.8	699.5	62.6	8.2	56.0	1 360.8
July	386.0	698.1	62.5	8.2	55.8	384.4	699.1	62.7	8.2	55.9	1 362.9
August	380.8	700.9	59.4	7.8	55.7	383.7	698.8	63.1	8.3	55.8	1 364.9
September	383.6	692.1	63.5	8.4	55.3	384.3	699.0	63.6	8.3	55.8	1 366.9
October	381.8	700.8	67.6	8.8	56.1	385.7	699.6	64.0	8.4	55.8	1 369.2
November	392.2	704.0	62.3	8.1	55.9	388.0	700.5	64.1	8.4	55.8	1 371.5
December	391.6	701.6	64.2	8.4	55.7	390.5	702.1	63.8	8.3	55.7	1 373.8
1999											
January	396.4	707.5	66.0	8.5	56.2	392.7	704.1	63.3	8.2	55.8	1 376.2
February	386.1	700.2	58.9	7.8	55.1	394.6	706.7	62.8	8.2	55.8	1 378.7
March	395.7	704.7	63.8	8.3	55.6	395.7	709.5	62.6	8.1	55.9	1 381.2
April	404.3	719.9	60.1	7.7	56.4	395.8	712.3	62.6	8.1	56.0	1 383.3
May	391.0	718.5	63.9	8.2	56.5	395.2	715.0	62.5	8.0	56.1	1 385.4
June	396.5	714.2	66.2	8.5	56.2	393.9	717.1	62.1	8.0	56.2	1 387.5
July	393.8	716.8	60.4	7.8	55.9	392.1	718.7	61.4	7.9	56.1	1 389.7
August	383.3	720.3	57.4	7.4	55.9	390.4	720.1	60.9	7.8	56.1	1 391.9
PERSONS											
1998											
June	1 172.2	1 601.3	156.0	8.9	65.2	1 172.5	1 599.5	153.3	8.7	65.0	2 697.1
July	1 174.7	1 595.7	159.2	9.1	65.0	1 172.7	1 600.7	154.6	8.8	65.0	2 701.1
August	1 170.0	1 604.3	149.4	8.5	64.8	1 174.9	1 603.9	155.0	8.8	65.0	2 705.1
September	1 175.4	1 602.4	158.1	9.0	65.0	1 179.2	1 609.0	154.2	8.7	65.1	2 709.2
October	1 183.1	1 616.3	154.5	8.7	65.3	1 184.5	1 614.8	152.1	8.6	65.1	2 713.7
November	1 199.7	1 626.6	145.4	8.2	65.2	1 190.2	1 620.6	149.0	8.4	65.1	2 718.2
December	1 193.1	1 625.8	147.5	8.3	65.1	1 194.9	1 625.7	145.7	8.2	65.1	2 722.8
1999											
January	1 203.4	1 636.5	142.9	8.0	65.2	1 198.4	1 630.1	143.1	8.1	65.0	2 727.6
February	1 190.5	1 622.4	141.2	8.0	64.5	1 200.9	1 633.6	141.8	8.0	65.0	2 732.4
March	1 204.0	1 632.3	137.8	7.8	64.7	1 202.7	1 636.5	141.7	8.0	65.0	2 737.3
April	1 213.6	1 649.7	139.9	7.8	65.3	1 204.4	1 639.3	142.4	8.0	65.0	2 741.5
May	1 195.3	1 644.4	148.6	8.3	65.3	1 206.1	1 642.0	143.0	8.0	65.0	2 745.7
June	1 214.0	1 641.6	146.7	8.2	65.0	1 207.2	1 644.4	143.0	8.0	65.0	2 749.9
July	1 210.3	1 639.8	141.9	8.0	64.7	1 207.7	1 646.3	142.6	8.0	65.0	2 754.3
August	1 202.1	1 653.0	136.6	7.6	64.9	1 208.2	1 648.5	141.9	7.9	64.9	2 758.7

(a) Trend estimates for February 1999 to July 1999 have been revised.

LABOUR FORCE STATUS (AGED 15 AND OVER)—South Australia(a)

SEASONALLY ADJUSTED.....

TREND.....

Month	SEASONALLY ADJUSTED.....					TREND.....					Civilian population aged 15 and over
	Employed full time	Total employed	Total unemployed	Unemployment rate	Participation rate	Employed full time	Total employed	Total unemployed	Unemployment rate	Participation rate	
	'000	'000	'000	%	%	'000	'000	'000	%	%	'000
MALES											
1998											
June	314.4	363.8	40.6	10.0	69.6	315.5	363.2	42.1	10.4	69.8	580.7
July	316.3	362.8	44.9	11.0	70.2	316.7	363.7	42.6	10.5	69.9	581.1
August	318.3	365.0	43.0	10.5	70.2	317.8	364.5	43.0	10.6	70.1	581.4
September	321.8	366.5	43.4	10.6	70.5	318.3	365.4	43.2	10.6	70.2	581.7
October	317.7	366.1	41.1	10.1	70.0	318.5	366.4	43.0	10.5	70.3	582.2
November	318.7	366.4	43.6	10.6	70.4	318.5	367.4	42.5	10.4	70.4	582.6
December	316.6	368.9	42.4	10.3	70.5	318.7	368.2	41.8	10.2	70.3	583.0
1999											
January	316.5	367.5	41.8	10.2	70.1	319.4	369.0	40.8	10.0	70.2	583.4
February	321.8	373.2	37.9	9.2	70.4	320.3	369.8	39.5	9.7	70.1	583.8
March	325.7	370.5	39.0	9.5	70.1	321.1	370.7	38.0	9.3	70.0	584.2
April	319.0	367.0	35.6	8.9	68.9	321.3	371.6	36.5	8.9	69.8	584.6
May	321.8	374.7	36.8	8.9	70.3	320.8	372.5	35.4	8.7	69.7	585.0
June	319.6	375.1	32.6	8.0	69.6	319.9	373.2	34.7	8.5	69.7	585.3
July	318.5	374.3	32.7	8.0	69.5	319.0	373.8	34.2	8.4	69.7	585.7
August	317.1	372.6	36.9	9.0	69.9	317.8	374.0	34.1	8.4	69.6	586.0
FEMALES											
1998											
June	143.4	270.2	30.1	10.0	49.4	144.9	273.9	29.7	9.8	50.0	607.3
July	144.9	273.3	28.0	9.3	49.6	145.3	275.0	29.4	9.6	50.1	607.7
August	146.7	277.1	31.2	10.1	50.7	146.0	277.4	28.7	9.4	50.3	608.0
September	147.9	282.1	27.7	8.9	50.9	146.7	280.6	27.8	9.0	50.7	608.4
October	148.3	285.2	24.9	8.0	50.9	147.2	283.6	26.9	8.7	51.0	608.8
November	146.4	285.4	27.0	8.6	51.3	147.2	286.0	26.2	8.4	51.2	609.2
December	146.9	289.4	24.8	7.9	51.5	147.2	287.2	25.8	8.2	51.3	609.7
1999											
January	146.3	286.5	26.7	8.5	51.3	147.5	287.5	25.6	8.2	51.3	610.1
February	148.9	285.6	25.8	8.3	51.0	148.2	287.2	25.7	8.2	51.2	610.5
March	148.3	288.3	25.9	8.2	51.4	149.1	286.8	25.8	8.2	51.2	610.9
April	150.7	287.1	23.9	7.7	50.9	150.0	286.7	25.8	8.2	51.1	611.3
May	153.1	285.5	27.7	8.9	51.2	150.8	287.0	25.8	8.2	51.1	611.6
June	149.1	285.6	25.7	8.3	50.9	151.5	287.5	25.8	8.2	51.2	611.9
July	151.6	289.6	24.9	7.9	51.4	152.1	288.2	25.8	8.2	51.3	612.3
August	153.9	290.6	26.2	8.3	51.7	152.5	289.0	25.8	8.2	51.4	612.6
PERSONS											
1998											
June	457.8	634.0	70.7	10.0	59.3	460.4	637.0	71.9	10.1	59.7	1 188.1
July	461.2	636.1	72.9	10.3	59.6	462.0	638.7	72.0	10.1	59.8	1 188.7
August	465.0	642.0	74.2	10.4	60.2	463.8	641.9	71.7	10.0	60.0	1 189.4
September	469.7	648.6	71.1	9.9	60.5	465.0	645.9	71.0	9.9	60.2	1 190.1
October	466.1	651.3	66.0	9.2	60.2	465.6	650.0	70.0	9.7	60.5	1 191.0
November	465.1	651.8	70.6	9.8	60.6	465.7	653.4	68.8	9.5	60.6	1 191.8
December	463.5	658.3	67.1	9.3	60.8	466.0	655.4	67.6	9.4	60.6	1 192.6
1999											
January	462.8	654.0	68.4	9.5	60.5	466.9	656.5	66.5	9.2	60.6	1 193.5
February	470.6	658.9	63.8	8.8	60.5	468.5	657.0	65.2	9.0	60.5	1 194.3
March	474.0	658.8	64.9	9.0	60.6	470.2	657.6	63.7	8.8	60.4	1 195.1
April	469.6	654.1	59.6	8.3	59.7	471.3	658.4	62.3	8.6	60.3	1 195.8
May	474.9	660.2	64.5	8.9	60.6	471.6	659.4	61.2	8.5	60.2	1 196.6
June	468.7	660.7	58.3	8.1	60.1	471.4	660.7	60.5	8.4	60.2	1 197.3
July	470.1	663.9	57.5	8.0	60.2	471.1	662.1	60.0	8.3	60.3	1 198.0
August	470.9	663.2	63.1	8.7	60.6	470.4	663.0	59.9	8.3	60.3	1 198.7

(a) Trend estimates for February 1999 to July 1999 have been revised.

LABOUR FORCE STATUS (AGED 15 AND OVER)—Western Australia(a)

SEASONALLY ADJUSTED.....

TREND.....

	Employed full time	Total employed	Total unemployed	Unemp- loyment rate	Partic- ipation rate		Employed full time	Total employed	Total unemployed	Unemp- loyment rate	Partic- ipation rate	Civilian population aged 15 and over
Month	'000	'000	'000	%	%		'000	'000	'000	%	%	'000
MALES												
1998												
June	446.0	504.8	44.8	8.2	76.9		446.3	504.9	41.1	7.5	76.4	714.6
July	446.2	502.4	42.6	7.8	76.1		446.6	505.4	41.9	7.7	76.4	715.9
August	447.4	504.7	41.4	7.6	76.2		446.9	506.1	42.3	7.7	76.5	717.1
September	447.3	509.8	41.5	7.5	76.7		446.9	507.1	42.4	7.7	76.5	718.3
October	446.9	509.0	41.9	7.6	76.6		446.9	508.1	42.2	7.7	76.5	719.7
November	445.8	507.6	41.7	7.6	76.2		446.9	509.0	41.9	7.6	76.4	721.1
December	447.6	510.4	42.8	7.7	76.6		446.7	509.8	41.5	7.5	76.3	722.5
1999												
January	446.8	510.4	40.9	7.4	76.2		446.5	510.3	41.0	7.4	76.2	723.8
February	444.7	508.0	40.9	7.5	75.7		445.9	510.5	40.1	7.3	75.9	725.1
March	446.2	512.2	37.3	6.8	75.6		445.2	510.5	39.1	7.1	75.7	726.4
April	447.5	513.9	39.4	7.1	76.0		444.6	510.5	38.3	7.0	75.4	727.7
May	440.5	508.6	36.0	6.6	74.7		444.3	510.6	37.7	6.9	75.2	729.0
June	442.6	507.9	38.7	7.1	74.9		444.4	510.8	37.4	6.8	75.1	730.2
July	445.4	510.5	36.8	6.7	74.8		444.8	511.2	37.1	6.8	75.0	731.4
August	448.4	515.3	37.2	6.7	75.4		445.4	511.8	36.9	6.7	74.9	732.5
FEMALES												
1998												
June	204.4	384.9	24.6	6.0	57.2		201.8	382.7	26.8	6.5	57.2	716.2
July	202.7	387.2	27.3	6.6	57.8		202.1	385.0	26.5	6.4	57.4	717.4
August	204.4	384.8	25.5	6.2	57.1		202.3	386.3	26.4	6.4	57.4	718.6
September	197.9	386.1	28.5	6.9	57.6		202.5	386.6	26.3	6.4	57.4	719.8
October	201.9	386.8	25.3	6.1	57.2		202.7	386.2	26.2	6.4	57.2	721.2
November	203.0	385.3	26.4	6.4	57.0		202.6	385.4	26.4	6.4	57.0	722.5
December	205.2	385.2	26.3	6.4	56.9		202.3	384.3	27.0	6.6	56.8	723.8
1999												
January	203.8	382.9	26.5	6.5	56.5		201.5	383.2	27.7	6.7	56.7	725.0
February	200.0	382.1	28.9	7.0	56.6		200.6	382.8	28.3	6.9	56.6	726.2
March	195.3	383.3	28.5	6.9	56.6		200.1	383.3	28.5	6.9	56.6	727.4
April	201.1	382.3	32.6	7.9	56.9		200.6	384.8	28.1	6.8	56.7	728.6
May	199.7	384.6	26.1	6.4	56.3		201.9	386.8	27.3	6.6	56.7	729.7
June	206.9	393.1	23.3	5.6	57.0		203.6	388.9	26.3	6.3	56.8	730.8
July	206.7	393.4	25.2	6.0	57.2		205.3	390.7	25.5	6.1	56.9	731.9
August	206.1	389.6	25.9	6.2	56.7		206.9	392.1	24.7	5.9	56.9	733.0
PERSONS												
1998												
June	650.4	889.7	69.4	7.2	67.0		648.2	887.6	67.9	7.1	66.8	1 430.9
July	648.9	889.6	69.9	7.3	66.9		648.7	890.3	68.4	7.1	66.9	1 433.3
August	651.8	889.6	66.9	7.0	66.6		649.1	892.5	68.6	7.1	66.9	1 435.7
September	645.3	895.9	70.0	7.2	67.2		649.4	893.7	68.6	7.1	66.9	1 438.2
October	648.8	895.8	67.3	7.0	66.8		649.6	894.3	68.4	7.1	66.8	1 440.9
November	648.7	892.9	68.1	7.1	66.6		649.5	894.3	68.3	7.1	66.7	1 443.6
December	652.8	895.6	69.1	7.2	66.7		649.0	894.0	68.5	7.1	66.5	1 446.3
1999												
January	650.5	893.3	67.4	7.0	66.3		647.9	893.5	68.7	7.1	66.4	1 448.8
February	644.7	890.1	69.8	7.3	66.1		646.4	893.2	68.4	7.1	66.3	1 451.3
March	641.5	895.6	65.8	6.8	66.1		645.3	893.8	67.7	7.0	66.1	1 453.9
April	648.6	896.2	72.0	7.4	66.5		645.1	895.3	66.4	6.9	66.0	1 456.3
May	640.2	893.2	62.1	6.5	65.5		646.2	897.4	65.0	6.8	66.0	1 458.7
June	649.5	901.0	61.9	6.4	65.9		648.0	899.7	63.7	6.6	65.9	1 461.0
July	652.0	903.9	62.0	6.4	66.0		650.1	901.9	62.6	6.5	65.9	1 463.3
August	654.6	904.8	63.1	6.5	66.0		652.3	904.0	61.7	6.4	65.9	1 465.6

(a) Trend estimates for February 1999 to July 1999 have been revised.

LABOUR FORCE STATUS (AGED 15 AND OVER)—Tasmania(a)

SEASONALLY ADJUSTED.....

TREND.....

Month	SEASONALLY ADJUSTED.....					TREND.....					Civilian population aged 15 and over
	Employed full time	Total employed	Total unemployed	Unemployment rate	Participation rate	Employed full time	Total employed	Total unemployed	Unemployment rate	Participation rate	
	'000	'000	'000	%	%	'000	'000	'000	%	%	'000
MALES											
1998											
June	93.7	109.7	14.7	11.8	69.0	94.2	109.8	15.2	12.1	69.3	180.4
July	93.3	107.3	15.6	12.7	68.1	93.7	109.1	15.2	12.2	68.9	180.4
August	93.1	108.7	15.9	12.8	69.1	93.5	108.8	15.0	12.1	68.7	180.4
September	92.5	108.4	14.8	12.0	68.3	93.5	108.6	14.7	11.9	68.4	180.4
October	93.7	109.3	14.5	11.7	68.6	93.4	108.5	14.4	11.7	68.1	180.4
November	94.9	109.2	13.3	10.8	67.9	93.2	108.3	14.2	11.6	67.9	180.4
December	93.9	108.6	13.0	10.7	67.4	92.7	107.9	14.2	11.6	67.7	180.4
1999											
January	91.4	106.4	15.1	12.4	67.4	92.2	107.6	14.5	11.8	67.6	180.4
February	89.9	106.6	15.4	12.6	67.6	91.8	107.5	14.8	12.1	67.8	180.4
March	91.1	107.3	15.4	12.6	68.1	91.9	107.9	14.9	12.1	68.1	180.4
April	93.9	109.5	13.9	11.3	68.4	92.5	108.7	14.6	11.8	68.4	180.4
May	93.7	109.4	14.7	11.9	68.9	93.5	109.5	14.0	11.4	68.5	180.3
June	94.3	111.3	13.3	10.7	69.2	94.6	110.2	13.4	10.8	68.6	180.3
July	94.8	110.4	12.6	10.3	68.2	95.6	110.8	12.7	10.3	68.5	180.2
August	98.1	110.7	11.3	9.3	67.7	96.6	111.1	12.1	9.8	68.4	180.2
FEMALES											
1998											
June	42.0	86.5	8.6	9.0	50.2	42.3	86.7	8.4	8.8	50.2	189.3
July	42.3	87.1	7.9	8.3	50.2	42.1	86.8	8.4	8.8	50.3	189.3
August	42.1	86.4	8.9	9.4	50.4	42.0	86.7	8.3	8.8	50.2	189.3
September	42.0	87.0	7.8	8.2	50.1	41.8	86.5	8.3	8.8	50.1	189.4
October	42.0	86.5	8.2	8.7	50.0	41.8	86.3	8.3	8.8	49.9	189.4
November	41.7	85.5	8.1	8.7	49.4	41.8	86.1	8.2	8.7	49.8	189.4
December	41.0	85.1	9.3	9.8	49.8	42.0	85.9	8.1	8.6	49.6	189.5
1999											
January	42.7	86.0	7.7	8.2	49.4	42.4	85.8	8.0	8.5	49.5	189.5
February	42.7	87.0	6.9	7.4	49.5	42.9	85.8	7.9	8.4	49.4	189.6
March	44.1	85.2	7.8	8.4	49.0	43.5	85.8	7.7	8.3	49.3	189.6
April	43.6	85.8	7.9	8.4	49.4	43.8	85.8	7.6	8.2	49.2	189.7
May	45.3	85.0	8.0	8.6	49.0	44.1	85.7	7.5	8.0	49.2	189.7
June	43.4	86.6	7.5	8.0	49.6	44.2	85.8	7.4	7.9	49.1	189.7
July	43.5	85.3	6.4	7.0	48.3	44.3	85.8	7.2	7.7	49.0	189.8
August	45.1	86.4	7.1	7.6	49.3	44.4	85.9	7.0	7.6	49.0	189.8
PERSONS											
1998											
June	135.7	196.2	23.3	10.6	59.4	136.6	196.4	23.6	10.7	59.5	369.7
July	135.6	194.4	23.5	10.8	58.9	135.8	195.9	23.6	10.7	59.4	369.7
August	135.2	195.1	24.9	11.3	59.5	135.4	195.5	23.4	10.7	59.2	369.7
September	134.5	195.4	22.6	10.4	59.0	135.3	195.2	23.0	10.6	59.0	369.7
October	135.8	195.8	22.7	10.4	59.1	135.2	194.8	22.7	10.4	58.8	369.8
November	136.6	194.8	21.4	9.9	58.5	135.0	194.4	22.4	10.3	58.6	369.8
December	134.9	193.7	22.3	10.3	58.4	134.7	193.8	22.3	10.3	58.4	369.9
1999											
January	134.1	192.4	22.8	10.6	58.2	134.6	193.4	22.4	10.4	58.3	369.9
February	132.5	193.6	22.3	10.3	58.4	134.8	193.3	22.6	10.5	58.4	370.0
March	135.3	192.5	23.2	10.8	58.3	135.4	193.7	22.6	10.4	58.5	370.0
April	137.5	195.3	21.8	10.0	58.7	136.4	194.4	22.2	10.3	58.6	370.0
May	138.9	194.4	22.7	10.5	58.7	137.6	195.3	21.5	9.9	58.6	370.0
June	137.7	197.9	20.9	9.5	59.1	138.8	196.0	20.7	9.6	58.6	370.0
July	138.2	195.6	19.0	8.9	58.0	139.9	196.6	19.9	9.2	58.5	370.0
August	143.1	197.1	18.4	8.5	58.3	140.9	197.0	19.2	8.9	58.4	370.0

(a) Trend estimates for February 1999 to July 1999 have been revised.

LABOUR FORCE STATUS (AGED 15 AND OVER)—Northern Territory(a)

TREND.....

Month	Employed full time '000	Total employed '000	Total unemployed '000	Unemp- loyment rate %	Partic- ipation rate %	Civilian population aged 15 and over '000
MALES						
1998						
June	46.1	51.5	3.3	6.1	77.3	70.9
July	46.2	52.0	3.2	5.8	77.6	71.0
August	46.3	52.4	3.0	5.5	77.9	71.1
September	46.4	52.7	2.9	5.2	78.1	71.2
October	46.5	53.0	2.7	4.9	78.1	71.4
November	46.6	53.3	2.5	4.6	78.1	71.5
December	46.7	53.6	2.4	4.3	78.2	71.6
1999						
January	46.9	54.0	2.4	4.2	78.5	71.8
February	47.0	54.3	2.3	4.1	78.7	72.0
March	46.9	54.4	2.3	4.1	78.6	72.1
April	46.7	54.3	2.3	4.0	78.1	72.3
May	46.4	53.9	2.1	3.8	77.3	72.5
June	46.2	53.6	2.0	3.5	76.5	72.7
July	46.1	53.5	1.8	3.2	75.9	72.8
August	46.2	53.4	1.6	2.9	75.4	72.9
FEMALES						
1998						
June	27.0	38.9	1.3	3.2	62.3	64.5
July	27.3	39.2	1.2	3.0	62.5	64.6
August	27.6	39.6	1.2	2.9	63.0	64.7
September	27.9	40.0	1.2	3.0	63.6	64.8
October	28.2	40.5	1.3	3.2	64.4	64.9
November	28.5	40.9	1.5	3.4	65.1	65.1
December	28.4	41.3	1.6	3.7	65.7	65.2
1999						
January	28.2	41.5	1.7	3.8	66.0	65.3
February	27.7	41.5	1.7	4.0	66.0	65.5
March	27.1	41.3	1.9	4.3	65.7	65.7
April	26.7	41.1	2.0	4.6	65.4	65.8
May	26.4	40.9	2.0	4.8	65.1	65.9
June	26.4	40.7	2.1	4.9	64.9	66.0
July	26.4	40.7	2.1	5.0	64.8	66.1
August	26.5	40.7	2.2	5.0	64.8	66.1
PERSONS						
1998						
June	73.1	90.4	4.6	4.9	70.1	135.5
July	73.4	91.2	4.4	4.6	70.4	135.7
August	73.8	92.0	4.2	4.4	70.8	135.9
September	74.3	92.7	4.1	4.3	71.2	136.1
October	74.7	93.5	4.1	4.2	71.6	136.3
November	75.1	94.2	4.0	4.1	71.9	136.5
December	75.2	94.8	4.0	4.0	72.3	136.8
1999						
January	75.1	95.5	4.0	4.0	72.5	137.1
February	74.7	95.8	4.1	4.1	72.7	137.5
March	74.1	95.7	4.2	4.2	72.5	137.8
April	73.4	95.3	4.2	4.2	72.1	138.1
May	72.8	94.8	4.2	4.2	71.5	138.4
June	72.5	94.4	4.1	4.1	71.0	138.7
July	72.5	94.2	3.9	4.0	70.6	138.9
August	72.6	94.1	3.7	3.8	70.3	139.0

(a) Trend estimates for February 1999 to July 1999 have been revised. Estimates for the most recent three months may be subject to significant revisions as data for later months become available.

LABOUR FORCE STATUS (AGED 15 AND OVER)—Australian Capital Territory(a)

TREND.....

Month	Employed full time '000	Total employed '000	Total unemployed '000	Unemp- loyment rate %	Partic- ipation rate %	Civilian population aged 15 and over '000
MALES						
1998						
June	69.6	81.0	7.1	8.1	77.8	113.3
July	69.2	81.0	7.1	8.0	77.8	113.3
August	68.9	81.1	7.0	7.9	77.8	113.2
September	68.7	81.1	6.8	7.7	77.7	113.2
October	68.7	81.2	6.5	7.4	77.3	113.4
November	68.8	81.3	6.2	7.1	77.0	113.7
December	69.0	81.4	6.0	6.9	76.8	113.9
1999						
January	69.1	81.6	5.9	6.7	76.6	114.1
February	69.1	81.8	5.8	6.6	76.6	114.3
March	69.0	82.0	5.8	6.6	76.7	114.4
April	69.0	82.3	5.8	6.6	76.9	114.5
May	69.0	82.6	5.9	6.7	77.2	114.6
June	69.1	82.9	6.0	6.8	77.5	114.7
July	69.3	83.1	6.1	6.8	77.6	114.9
August	69.4	83.3	6.1	6.8	77.7	115.1
FEMALES						
1998						
June	46.2	75.2	4.4	5.6	65.8	121.1
July	45.9	75.1	4.4	5.5	65.6	121.2
August	45.7	74.7	4.4	5.5	65.2	121.2
September	45.8	74.3	4.3	5.4	64.8	121.2
October	46.0	74.1	4.2	5.4	64.5	121.3
November	46.4	74.1	4.2	5.3	64.5	121.4
December	46.8	74.5	4.1	5.2	64.7	121.5
1999						
January	47.2	74.9	4.1	5.2	65.0	121.6
February	47.3	75.1	4.2	5.3	65.2	121.7
March	47.3	75.2	4.3	5.4	65.3	121.8
April	47.3	75.4	4.2	5.3	65.3	121.9
May	47.5	75.7	4.1	5.1	65.4	122.0
June	47.9	76.0	3.9	4.8	65.5	122.0
July	48.5	76.5	3.6	4.5	65.6	122.1
August	49.0	76.9	3.4	4.3	65.8	122.2
PERSONS						
1998						
June	115.7	156.2	11.5	6.9	71.6	234.4
July	115.1	156.1	11.5	6.8	71.5	234.4
August	114.6	155.7	11.3	6.8	71.3	234.4
September	114.4	155.4	11.1	6.7	71.0	234.4
October	114.7	155.3	10.7	6.5	70.7	234.7
November	115.2	155.5	10.4	6.3	70.6	235.1
December	115.8	155.9	10.1	6.1	70.5	235.4
1999						
January	116.3	156.4	10.0	6.0	70.6	235.7
February	116.4	156.9	10.0	6.0	70.7	235.9
March	116.3	157.2	10.1	6.0	70.8	236.2
April	116.3	157.6	10.1	6.0	70.9	236.4
May	116.6	158.2	10.0	5.9	71.1	236.6
June	117.1	158.9	9.9	5.8	71.3	236.8
July	117.8	159.6	9.7	5.7	71.4	237.1
August	118.4	160.2	9.6	5.6	71.5	237.3

(a) Trend estimates for February 1999 to July 1999 have been revised. Estimates for the most recent three months may be subject to significant revisions as data for later months become available.

EXPLANATORY NOTES

INTRODUCTION

1 This publication contains preliminary estimates of the civilian labour force derived from the Labour Force Survey component of the monthly population survey. Estimates for the current month are preliminary and subject to revision. Revised estimates for the current month and more detailed estimates will be published in *Labour Force, Australia* (Cat. no. 6203.0).

MONTHLY POPULATION SURVEY

2 The population survey is based on a multi-stage area sample of private dwellings (currently about 30,000 houses, flats, etc.) and a list sample of non-private dwellings (hotels, motels, etc.), and covers about 0.5% of the population of Australia. The information is obtained from the occupants of selected dwellings by specially trained interviewers. The interviews are generally conducted during the two weeks beginning on the Monday between the 6th and 12th of each month. The information obtained relates to the week before the interview (i.e. the reference week).

TELEPHONE INTERVIEWING

3 The ABS has introduced the use of telephone interviewing into the Labour Force Survey. Households selected for the Labour Force Survey are interviewed each month for 8 months, with one eighth of the sample being replaced each month. The first interview is conducted face-to-face. Subsequent interviews are conducted by telephone (if acceptable to the respondent). Telephone interviewing was phased in for each new sample group from August 1996 to February 1997.

4 During the period of implementation, the new method produced different estimates than would have been obtained under the old methodology. The effect peaked in November 1996, when it is estimated that the published estimate of total employment was about 36,000 to 48,000 lower than would have been measured under the old methodology. The effect dissipated over the final months of implementation and was no longer discernible from February 1997. Therefore, the estimates for February 1997 and onwards are directly comparable to estimates for periods prior to August 1996.

SCOPE OF SURVEY

5 The Labour Force Survey includes all persons aged 15 and over except members of the permanent defence forces, certain diplomatic personnel of overseas governments customarily excluded from census and estimated populations, overseas residents in Australia, and members of non-Australian defence forces (and their dependants) stationed in Australia.

COVERAGE

6 In the Labour Force Survey, coverage rules are applied which aim to ensure that each person is associated with only one dwelling, and hence has only one chance of selection. The coverage rules are necessarily a balance between theoretical and operational considerations. Nevertheless, the chance of a person being enumerated at two separate dwellings in the survey is considered to be negligible.

POPULATION BENCHMARKS

7 Labour Force Survey estimates are calculated in such a way as to add up to independent estimates of the civilian population aged 15 and over (population benchmarks). From February 1999, labour force estimates have been compiled using benchmarks based on the results of the 1996 Census of Population and Housing. Small revisions were made to many of the historical estimates from January 1995 to January 1999.

REVISION OF SERIES

8 From April 1986, the definition of employed persons was changed to include persons who worked without pay between 1 and 14 hours per week in a family business or on a farm (i.e. contributing family workers). For further information, see paragraphs 36 and 37 of the Explanatory Notes to the February 1987 issue of *Labour Force, Australia* (Cat. no. 6203.0).

EXPLANATORY NOTES

SURVEY SAMPLE REDESIGN

9 The Labour Force Survey sample has been reselected using information collected in the 1996 Census of Population and Housing.

10 The bulk of the new sample was phased in over the period September 1997 to April 1998, with one eighth of this portion of the sample being introduced every month. The remainder of the sample (about 15% of the total), which covers less settled areas of Australia and non-private dwellings was rotated in full for New South Wales, Victoria, Tasmania, Northern Territory and Australian Capital Territory in September 1997, and for Queensland, South Australia and Western Australia in October 1997. Such a pattern of implementation means that any changes to labour force estimates due to differences between the two samples, or any other influences, was spread over the eight months.

11 For further details, see *Information Paper: Labour Force Survey Sample Design* (Cat. no. 6269.0).

RELIABILITY OF ESTIMATES

12 Two types of error are possible in an estimate based on a sample survey: sampling error and non-sampling error.

Sampling error occurs because a sample, rather than the entire population, is surveyed. One measure of the likely difference resulting from not including all dwellings in the survey is given by the standard error. There are about two chances in three that a sample estimate will differ by less than one standard error from the figure that would have been obtained if all dwellings had been included in the survey, and about nineteen chances in twenty that the difference will be less than two standard errors. Standard errors of estimates for the latest month and of estimates of movements since the previous month are shown on pages 30 and 31. Standard errors of other estimates and other movements may be determined by using information in the Technical Notes in *Labour Force, Australia* (Cat. no. 6203.0).

Non sampling error arises from inaccuracies in collecting, recording and processing the data. Every effort is made to minimise reporting error by the careful design of questionnaires, intensive training and supervision of interviewers, and efficient data processing procedures.

SEASONAL ADJUSTMENT AND TREND ESTIMATION

13 Seasonally adjusted series are published in Tables 2, 5 and 12 to 17. Seasonal factors are reviewed annually to take account of each additional year's original data. The results of the latest review were used to compile the revised seasonally adjusted and trend estimates given in this publication. Information about the method of adjustment and revised seasonally adjusted and trend estimates for all months from January 1991 were published in an appendix to the February 1996 issue of *Labour Force, Australia* (Cat. no. 6203.0).

14 Seasonal adjustment is a means of removing the estimated effects of normal seasonal variation from the series so that the effects of other influences on the series can be more clearly recognised. Seasonal adjustment does not aim to remove the irregular or non-seasonal influences which may be present in any particular month. This means that month-to-month movements of the seasonally adjusted estimates may not be reliable indicators of trend behaviour. For example, irregular factors unrelated to the trend account for more than half the seasonally adjusted movement with the following frequency:

- Employment: 5 in 10 monthly movements
- Unemployment: 7 in 10 monthly movements
- Unemployment rate: 7 in 10 monthly movements
- Participation rate: 9 in 10 monthly movements.

EXPLANATORY NOTES

SEASONAL ADJUSTMENT AND TREND ESTIMATION *continued*

15 The smoothing of seasonally adjusted series reduces the impact of the irregular component of the seasonally adjusted series, and creates trend estimates. These trend estimates are derived by applying a 13-term Henderson-weighted moving average to all months except the last six. The last six monthly trend estimates are obtained by applying surrogates of the Henderson average to the seasonally adjusted series. Trend series are used to analyse the underlying behaviour of the series over time. These are published in tables 3, 6 and 12 to 19.

16 While this smoothing technique enables estimates to be produced for the latest month, it does result in revisions to the most recent months as additional observations become available. Generally, subsequent revisions become smaller, and after three months have a negligible impact on the series. There will also be revisions as a result of the annual review of seasonal factors.

17 Trend estimates are published for the Northern Territory in table 18 and for the Australian Capital Territory in table 19. Unadjusted series for the two Territories have shown, historically, a high degree of variability, which can lead to considerable revisions to the seasonally adjusted estimates after each annual seasonal factor re-analysis. Seasonally adjusted estimates are not currently published for the two Territories. The most recent six months trend estimates are subject to revision. For the three most recent months, the revision may be relatively large. Inferences about trends drawn from smoothed seasonally adjusted (trend) estimates for months earlier than the latest three months are unlikely to be affected by month to month revisions. They may be affected by revision resulting from the annual re-analysis of seasonal factors.

18 For further information, see *A Guide to Interpreting Time Series—Monitoring 'Trends': an Overview* (Cat. no. 1348.0) or contact the Assistant Director, Time Series Analysis on (02) 6252 6345.

RELATED PUBLICATIONS

19 Users may also wish to refer to *Labour Force, Australia* (Cat. no. 6203.0). This publication contains a detailed list of related publications which are available from ABS Bookshops.

20 Current publications produced by the ABS are listed in the *Catalogue of Publications and Products* (Cat. no. 1101.0). The ABS also issues, on Tuesdays and Fridays, a *Release Advice* (Cat. no. 1105.0) which lists publications to be released in the next few days. The Catalogue and Release Advice are available from any ABS office.

UNPUBLISHED STATISTICS

21 As well as the statistics included in this and related publications, the ABS may have other relevant unpublished data available. Inquiries should be made to Michael Johnson on 02 6252 6525 or to any ABS office.

EFFECTS OF ROUNDING

22 Estimates have been rounded and discrepancies may occur between sums of the component items and totals.

23 Estimates of movement shown in this publication are obtained by taking the difference of unrounded estimates. The movement estimate is then rounded to one decimal place. Therefore where a discrepancy occurs between the reported movement and the difference of the rounded estimates, the reported movement will be more accurate.

SYMBOLS AND OTHER USAGES

- * subject to sampling variability too high for most practical uses. See the Technical Notes in Cat. no. 6203.0 for more details.
- .. not applicable
- r revised
- pts percentage points

GLOSSARY

Actively looking for work	Includes writing, telephoning or applying in person to an employer for work; answering an advertisement for a job; checking factory noticeboards or the touchscreens at the Centrelink offices; being registered with Centrelink as a jobseeker; checking or registering with any other employment agency; advertising or tendering for work; and contacting friends or relatives.
Attending school	Persons aged 15 to 19 enrolled full time at secondary or high schools in the reference week.
Attending tertiary educational institution full time	Persons aged 15 to 24 enrolled full time at a TAFE college, university, or other educational institution in the reference week.
Employed	Persons aged 15 and over who, during the reference week: <ul style="list-style-type: none"> ■ worked for one hour or more for pay, profit, commission or payment in kind in a job or business, or on a farm (comprising employees, employers and own account workers); or ■ worked for one hour or more without pay in a family business or on a farm (i.e. contributing family workers); or ■ were employees who had a job but were not at work and were: <ul style="list-style-type: none"> ■ on paid leave, ■ on leave without pay for less than four weeks up to the end of the reference week, ■ stood down without pay because of bad weather or plant breakdown at their place of employment for less than four weeks up to the end of the reference week, ■ on strike or locked out, ■ on workers' compensation and expected to be returning to their job, or ■ receiving wages or salary while undertaking full-time study; or ■ were employers, own account workers or contributing family workers who had a job, business or farm, but were not at work.
Full-time workers	Employed persons who usually worked 35 hours or more a week (in all jobs) and those who, although usually working less than 35 hours a week, worked 35 hours or more during the reference week
Labour force	For any group, persons who were employed or unemployed, as defined.
Labour force status	A classification of the civilian population aged 15 and over into employed, unemployed or not in the labour force, as defined. The definitions conform closely to the international standard definitions adopted by the International Conferences of Labour Statisticians.
Not in the labour force	Persons who were not in the categories employed or unemployed as defined.
Participation rate	For any group, the labour force expressed as a percentage of the civilian population aged 15 and over in the same group.
Part-time workers	Employed persons who usually worked less than 35 hours a week and who did so during the reference week.
Seasonally adjusted series	A time series of estimates with the estimated effects of normal seasonal variation removed. See Explanatory Notes 13 to 14 for more detail.
Trend series	A smoothed seasonally adjusted series of estimates. See Explanatory Notes 15 to 17 for more detail.

G L O S S A R Y

Unemployed	Persons aged 15 and over who were not employed during the reference week, and: <ul style="list-style-type: none"> ■ had actively looked for full-time or part-time work at any time in the four weeks up to the end of the reference week and: <ul style="list-style-type: none"> ■ were available for work in the reference week, or would have been available except for temporary illness (i.e. lasting for less than four weeks to the end of the reference week), or ■ were waiting to start a new job within four weeks from the end of the reference week and would have started in the reference week if the job had been available then; or ■ were waiting to be called back to a full-time or part-time job from which they had been stood down without pay for less than four weeks up to the end of the reference week (including the whole of the reference week) for reasons other than bad weather or plant breakdown.
Unemployed looking for first full-time job	Unemployed persons looking for full-time work (as defined above) who had never worked full time for two weeks or more
Unemployed looking for full-time work	Unemployed persons who actively looked for full-time work, or were to resume a full-time job from which they had been stood down.
Unemployed looking for part-time work	Unemployed persons who had actively looked for part-time work only, or were to resume a part-time job from which they had been stood down.
Unemployment rate	For any group, the number of unemployed persons expressed as a percentage of the labour force in the same group.
Unemployment to population ratio	For any group, the number of unemployed persons expressed as a percentage of the civilian population in the same group.

STANDARD ERRORS

The estimates in this publication are based on information gained from the occupants of a sample survey of dwellings. Because the entire population is not surveyed, the published estimates are subject to sampling error. The most common way of quantifying such sampling error is to calculate the standard error for the published estimate or statistic.

LEVEL ESTIMATES

To illustrate, let us say the published level estimate for employed persons aged 15 to 19 is 500,000. The calculated standard error in this case is 8,700. The standard error is then used to interpret the level estimate of 500,000. For instance, the standard error of 8,700 indicates that:

- There are approximately two chances in three that the real value falls within the range 491,300 to 508,700 ($500,000 \pm 8,700$)
- There are approximately nineteen chances in twenty that the real value falls within the range 482,600 to 517,400 ($500,000 \pm 17,400$).

The real value in this case is the result we would obtain if we could enumerate the total population.

The following tables show the standard errors for this month's level estimates.

	EMPLOYED.....			UNEMPLOYED.....			Labour force	Not in labour force	Unemployment rate	Participation rate
	Full time	Part time	Total	Looking for f/t work	Looking for p/t work	Total				
	'000	'000	'000	'000	'000	'000	'000	'000	pts	pts
NSW	18.1	9.8	21.5	5.2	3.7	5.8	22.4	17.1	0.2	0.4
Vic.	13.6	8.1	16.2	4.2	3.0	4.7	16.9	12.8	0.2	0.4
Qld	10.7	7.3	12.1	4.0	2.6	4.5	12.5	10.0	0.3	0.5
SA	5.0	3.5	5.7	2.0	1.2	2.2	5.9	5.0	0.3	0.5
WA	5.4	3.9	6.0	2.1	1.4	2.4	6.1	4.9	0.2	0.4
Tas.	1.8	1.3	2.1	0.8	0.4	0.9	2.1	1.9	0.4	0.6
NT	1.3	0.8	1.4	0.3	0.2	0.4	1.4	1.0	0.4	1.0
ACT	1.8	1.1	2.0	0.5	0.4	0.6	2.1	1.4	0.4	0.9
Males	21.1	9.4	22.9	7.3	4.1	7.8	24.0	15.2	0.1	0.3
Females	15.3	14.0	19.7	5.7	4.8	6.9	20.4	19.1	0.2	0.3
Persons	27.5	15.9	35.5	8.6	5.8	9.6	37.9	24.9	0.1	0.3

	NUMBER OF UNEMPLOYED PERSONS.....					UNEMPLOYMENT RATE.....				
	Aged 15-19 looking for f/t work	Aged 20 and over looking for f/t work	Total looking for f/t work	Looking for p/t work	Total	Aged 15-19 looking for f/t work	Aged 20 and over looking for f/t work	Total looking for f/t work	Looking for p/t work	Total
	'000	'000	'000	'000	'000	pts	pts	pts	pts	pts
NSW	2.4	5.0	5.2	3.7	5.8	2.8	0.2	0.2	0.5	0.2
Vic.	1.7	4.0	4.2	3.0	4.7	3.1	0.2	0.2	0.5	0.2
Qld	1.7	3.7	4.0	2.6	4.5	2.6	0.3	0.3	0.5	0.3
SA	0.9	1.9	2.0	1.2	2.2	4.2	0.4	0.4	0.6	0.3
WA	1.1	2.0	2.1	1.4	2.4	2.9	0.3	0.3	0.5	0.2
Tas.	0.4	0.8	0.8	0.4	0.9	4.4	0.5	0.5	0.7	0.4
NT	0.2	0.3	0.3	0.2	0.4	5.4	0.4	0.4	1.1	0.4
ACT	0.3	0.5	0.5	0.4	0.6	6.8	0.4	0.4	0.9	0.4
Males	3.0	7.0	7.3	4.1	7.8	1.7	0.2	0.2	0.6	0.1
Females	2.8	5.4	5.7	4.8	6.9	2.7	0.2	0.3	0.3	0.2
Persons	3.9	8.1	8.6	5.8	9.6	1.4	0.1	0.1	0.2	0.1

STANDARD ERRORS *continued*

MOVEMENT ESTIMATES

The following example illustrates how to use the standard error to interpret a movement estimate. Let us say that one month the published level estimate for females employed part time in Australia is 1,390,000; the next month the published level estimate is 1,400,000. The calculated standard error for the movement estimate is 13,000. The standard error is then used to interpret the published movement estimate of 10,000. For instance, the standard error of 13,000 indicates that:

- There are approximately two chances in three that the real movement over the two month period falls within the range -3,000 to 23,000 (10,000 + or - 13,000)
- There are approximately nineteen chances in twenty that the real movement falls within the range -16,000 to 36,000 (10,000 + or - 26,000).

The following tables show the standard errors for this month's movement estimates.

	EMPLOYED.....			UNEMPLOYED.....			Labour force	Not in labour force	Unemp- loyment rate pts	Partic- ipation rate pts
	Full time	Part time	Total	Looking for f/t work	Looking for p/t work	Total				
	'000	'000	'000	'000	'000	'000	'000	'000		
NSW	9.9	6.7	10.8	4.0	2.8	4.4	11.0	9.5	0.1	0.2
Vic.	7.5	5.3	8.3	3.1	2.3	3.5	8.5	7.1	0.1	0.2
Qld	6.7	4.7	7.4	2.8	2.0	3.1	7.6	6.2	0.2	0.3
SA	3.1	2.3	3.5	1.4	0.9	1.5	3.6	3.1	0.2	0.3
WA	3.8	2.8	4.3	1.6	1.1	1.7	4.4	3.5	0.2	0.3
Tas.	1.2	0.9	1.4	0.6	0.4	0.6	1.4	1.3	0.3	0.4
NT	1.1	0.7	1.2	0.3	0.2	0.3	1.2	0.9	0.4	0.9
ACT	1.0	0.7	1.1	0.4	0.3	0.4	1.1	0.8	0.3	0.5
Males	14.0	7.0	14.7	5.5	3.2	5.9	15.0	10.7	0.1	0.2
Females	10.9	9.9	13.3	4.4	3.7	5.2	13.7	13.0	0.1	0.2
Persons	16.1	11.1	17.9	6.4	4.4	7.1	18.4	15.3	0.1	0.1

	NUMBER OF UNEMPLOYED PERSONS.....					UNEMPLOYMENT RATE.....				
	Aged 15-19 looking for f/t work	Aged 20 and over looking for f/t work	Total looking for f/t work	Looking for p/t work	Total	Aged 15-19 looking for f/t work pts	Aged 20 and over looking for f/t work pts	Total looking for f/t work pts	Looking for p/t work pts	Total pts
	'000	'000	'000	'000	'000	pts	pts	pts	pts	pts
NSW	1.9	3.8	4.0	2.8	4.4	2.2	0.2	0.2	0.4	0.1
Vic.	1.4	3.0	3.1	2.3	3.5	2.4	0.2	0.2	0.4	0.1
Qld	1.5	2.7	2.8	2.0	3.1	2.3	0.2	0.2	0.4	0.2
SA	0.7	1.3	1.4	0.9	1.5	3.2	0.3	0.3	0.4	0.2
WA	0.9	1.5	1.6	1.1	1.7	2.4	0.2	0.2	0.4	0.2
Tas.	0.3	0.6	0.6	0.4	0.6	3.6	0.4	0.4	0.6	0.3
NT	0.2	0.3	0.3	0.2	0.3	4.6	0.4	0.4	1.2	0.4
ACT	0.2	0.4	0.4	0.3	0.4	5.5	0.3	0.3	0.7	0.3
Males	2.5	5.3	5.5	3.2	5.9	1.4	0.1	0.1	0.5	0.1
Females	2.3	4.1	4.4	3.7	5.2	2.2	0.2	0.2	0.2	0.1
Persons	3.0	6.1	6.4	4.4	7.1	1.1	0.1	0.1	0.2	0.1

WHAT IF...? REVISIONS TO TREND ESTIMATES

EFFECT OF NEW SEASONALLY ADJUSTED ESTIMATES ON TREND ESTIMATES

Each time new seasonally adjusted estimates become available, trend estimates are revised (see paragraphs 13 and 14 of Explanatory Notes).

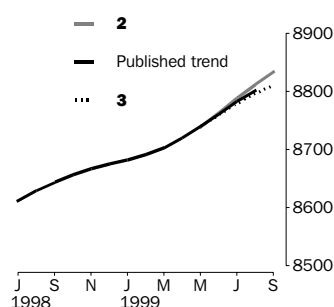
TREND REVISIONS

The examples in the tables below show four illustrative scenarios and the consequent revisions to previous trend estimates of employment and unemployment rate.

- 1** The September seasonally adjusted estimate is the same as the August estimate.
- 2** The September seasonally adjusted estimate is higher than the August estimate by:
 - +0.32% for employment
 - +2.0% for the unemployment rate
- 3** The September seasonally adjusted estimate is lower than the August estimate by:
 - -0.32% for employment
 - -2.0% for the unemployment rate
- 4** The September seasonally adjusted estimate results in a revised August trend estimate which is identical to the new September trend estimate.

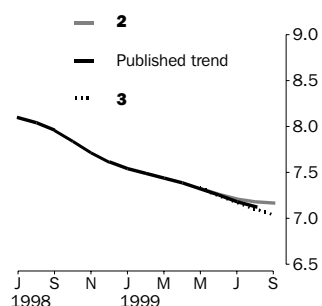
The percentage changes of 0.32% and 2.0% were chosen because they represent the average absolute monthly percentage changes in employment and the unemployment rate respectively.

EMPLOYMENT ('000)



		WHAT IF NEXT MONTH'S SEASONALLY ADJUSTED ESTIMATE IS:			
		1	2	3	4
		8 818.8 <i>i.e. the same as Aug 1999</i>	8 846.7 <i>i.e. rises by 0.32%</i>	8 791.0 <i>i.e. falls by 0.32%</i>	8 692.8 <i>i.e. same trend for Aug & Sep</i>
	TREND AS PUBLISHED				
1999					
June	8 761.0	8 761.6	8 762.8	8 760.3	8 755.9
July	8 782.7	8 784.3	8 788.5	8 780.2	8 765.7
August	8 801.3	8 804.8	8 812.6	8 797.0	8 769.6
September (new)	—	8 822.7	8 834.4	8 811.0	8 769.6

UNEMPLOYMENT RATE (%)



		WHAT IF NEXT MONTH'S SEASONALLY ADJUSTED ESTIMATE IS:			
		1	2	3	4
		7.2 <i>i.e. the same as Aug 1999</i>	7.3 <i>i.e. rises by 2.0%</i>	7.0 <i>i.e. falls by 2.0%</i>	7.5 <i>i.e. same trend for Aug & Sep</i>
	TREND AS PUBLISHED				
1999					
June	7.3	7.3	7.3	7.3	7.3
July	7.2	7.2	7.2	7.2	7.2
August	7.1	7.1	7.2	7.1	7.2
September (new)	—	7.1	7.2	7.0	7.2

SELF-HELP ACCESS TO STATISTICS

<i>CPI INFOLINE</i>	For current and historical Consumer Price Index data, call 1902 981 074 (call cost 75c per minute).
<i>DIAL-A-STATISTIC</i>	For the latest figures for National Accounts, Balance of Payments, Labour Force, Average Weekly Earnings, Estimated Resident Population and the Consumer Price Index call 1900 986 400 (call cost 75c per minute).
<i>INTERNET</i>	www.abs.gov.au
<i>LIBRARY</i>	A range of ABS publications is available from public and tertiary libraries Australia-wide. Contact your nearest library to determine whether it has the ABS statistics you require.

WHY NOT SUBSCRIBE?

<i>PHONE</i>	+61 1300 366 323
<i>FAX</i>	+61 03 9615 7848

CONSULTANCY SERVICES

ABS offers consultancy services on a user pays basis to help you access published and unpublished data. Data that is already published and can be provided within 5 minutes is free of charge. Statistical methodological services are also available. Please contact:

<i>INQUIRIES</i>	<i>City</i>	<i>By phone</i>	<i>By fax</i>
	Canberra	02 6252 6627	02 6207 0282
	Sydney	02 9268 4611	02 9268 4668
	Melbourne	03 9615 7755	03 9615 7798
	Brisbane	07 3222 6351	07 3222 6283
	Perth	08 9360 5140	08 9360 5955
	Adelaide	08 8237 7400	08 8237 7566
	Hobart	03 6222 5800	03 6222 5995
	Darwin	08 8943 2111	08 8981 1218

<i>POST</i>	Client Services, ABS, PO Box 10, Belconnen ACT 2616
<i>EMAIL</i>	client.services@abs.gov.au



2620200008996
ISSN 1031-038X

RRP \$17.50

© Commonwealth of Australia 1999

Produced by the Australian Bureau of Statistics